

# CATALOG HORECA

valid from 03/2026



LUXURY EVERY DAY, WITH FINE BAVARIAN CRYSTAL



# CONTENT

Highlights	4		
Go Green - Sustainability	5		
All about Nachtmann	6 - 11		
<b>NEXT GEN</b> Design Project NextGen	12 - 13		
Characteristics of a Nachtmann Glass	14		
Nachtmann Social Media	15		
APERITIVO	16 - 17	SUPREME	90 - 91
NACHTMANN BARISTA	18 - 19	Nachtmann TATTOO	92 - 93
BOSSA NOVA EDITION <b>NEW</b>	20 - 21	TRAUBE	94 - 95
BOSSA NOVA <b>NEW</b>	22 - 35	ViNova	96 - 97
CELEBRATION	36 - 37	VIVENDI	98 - 99
NACHTMANN ETHNO <b>NEW</b>	38 - 47		
Nachtmann Ethno BLACK EDITION	46	BARWARE	100 - 131
Nachtmann Ethno COLORS	47	Aperitivo, Bossa Nova Edition, Bossa Nova, Celebration, Nachtmann Ethno, Highland, Jules, Noblesse, Palais, Punk, Sculpture, Shu Fa, Square	
Nachtmann HERITAGE <b>NEW</b>	48 - 49		
HIGHLAND	50 - 51		
<b>NEXT GEN</b> JULES	52 - 53	VASES/HURRICANE LAMPS	132 - 141
MINERVA	54 - 55	Bossa Nova, Nachtmann Ethno, Minerva, Noblesse, Quartz, Saphir, Sculpture, Square	
NOBLESSE <b>NEW</b>	56 - 73		
Noblesse BLACK EDITION	58	ACCESSORIES	142 - 143
Noblesse JOHN WICK	59	Care and Use	144 - 145
Noblesse COLORS	60 - 65	Merchandise Examples	146 - 147
Noblesse HOT BEVERAGES	71	Size Chart	148 - 149
PALAIS	74 - 75		
<b>NEXT GEN</b> PUNK	76 - 77	General Conditions of Sale	150 - 152
<b>NEXT GEN</b> QUARTZ	78 - 79		
RUMBA	80		
SAMBA	81		
SAPHIR	82 - 83		
<b>NEXT GEN</b> SCULPTURE	84 - 85		
<b>NEXT GEN</b> SHU FA	86 - 87		
SQUARE <b>NEW</b>	88 - 89		

We regret any errors in our specifications for sizes, colours, volumes or item/carton pictures. However, claims resulting from such errors cannot be accepted.

Follow us on social media - connect, follow and love it:



[www.facebook.com/glashersteller](http://www.facebook.com/glashersteller)



[www.instagram.com/nachtmann\\_de](http://www.instagram.com/nachtmann_de)



[www.youtube.com > nachtmann](http://www.youtube.com > nachtmann)



[www.pinterest.de/Nachtmann\\_Glashersteller](http://www.pinterest.de/Nachtmann_Glashersteller)



# HIGHLIGHTS



NACHTMANN ETHNO 38 - 47 | NOBLESSE 56 - 73



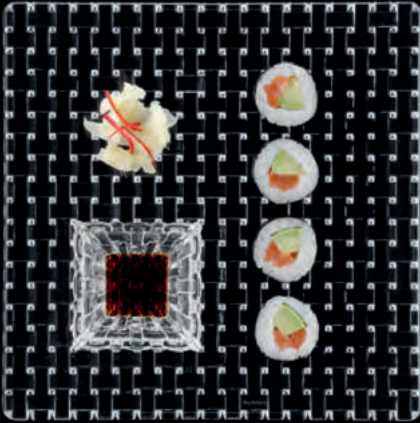
NACHTMANN ETHNO 38 - 47



NACHTMANN ETHNO 38 - 47



NACHTMANN BARISTA 18 - 19



BOSSA NOVA 22 - 35

## REFERS TO MACHINE-PRODUCTION AT THE FACTORIES AMBERG AND WEIDEN, GERMANY



### OUR CONTRIBUTION TO GREATER SUSTAINABILITY



#### Our Glassware

- Sustainable product – very durable and, when properly cared for, is reusable for many years.
- Our crystal glass meets all relevant legislation and is certified as safe for use with food and beverages.
- Crystal glass contains no Bisphenol A (BPA) and does not react with substances or materials it comes into contact with (unlike plastic, which can release Bisphenol A (BPA)).
- 100% recyclable.



#### Our Factories

- Implemented environmental certifications ISO 14001: 2015 and ISO 50001: 2018.
- The main raw materials, accounting for approximately 70% of the volume, are sourced from the local region, avoiding long transport distances, e.g., quartz sand from Hirschau, Germany.
- Offcuts generated during the production process are immediately reused, leading to up to 50% reduction in raw material requirements and a reduction in the energy required for glass melting.
- Energy-saving projects include: compressed air reduction, burner technology, energy-efficient drives, LED lighting, waste heat recovery, water-saving measures.



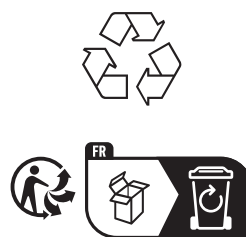
#### Our Packaging

- Our packaging is licensed with the „Grüner Punkt“ (Germany) or „Bonus Holsystem“ (Austria).
- FSC® - Forest Stewardship Council applies to 45% of our packaging.
- Our packaging is recyclable.
- We only work with sustainably oriented suppliers.



#### Green Electricity

- We exclusively use green electricity in our company.
- This measure reduces CO2 by 11.000 tons annually.
- Additionally, we support the expansion of renewable energy and actively contribute to the protection of our environment.
- As a result, we have been able to reduce our carbon footprint by 30%.



## **Luxury every day, with fine Bavarian crystal**

Our heritage as a Bavarian glassmaker crafting hand and machine-made crystal stretches back over two centuries, yet we are still concerned with today, tomorrow and the next day. At Nachtmann we believe that each day offers the prospect of joy and surprise. Every day is special. Any gathering of friends can become an occasion. Any family meal can be memorable. The most casual get-together can become a celebration.

We inspire people to share these precious moments by bringing a little luxury and sparkle to everyday life through our brilliant crystal glassware. A gift of our glassware can be remarkably affordable, and our high-quality decorative glasses, plates, bowls and tabletop accessories are sought by style-conscious consumers across the world.



## Sparkling since 1834

Since Michael Nachtmann founded our company in 1834, we have steadily built our reputation as a specialist in crystal glassware. In 2004 we became the lifestyle brand of Riedel Glassworks, a family owned business with a proud 265 - year heritage.

In 2024 Nachtmann is celebrating its 190th birthday. At Nachtmann, our past shapes our present and our present shapes our future. From previous generations to the next generation, we respect craftsmanship and we relish creativity. From classic to cutting-edge, from special days to the everyday, we provide more than 190 years of crystal glassware fit for the occasion.

1834

Glassmaker Michael Nachtmann founds the company F.X. Nachtmann.

1900

Zacharias Frank takes over the company and moves the head-quarters to Neustadt an der Waldnaab, the present company headquarters.

1945

Nachtmann rebuilds the partially-destroyed production facilities and restarts lead crystal production in Neustadt and Riedlhütte.

1983

The foundations are laid for the new, state-of-the-art crystal facility in Weiden.

1995

Nachtmann takes over the Amberg factory from Rosenthal in order to increase its own production facilities of machine made crystal stemware.



**2004**

On September 17th, Riedel takes over 100% of the shares of the Nachtmann Crystal AG.

**2010**

Certification as a company with mechanisms in place to provide comprehensive environmental protection (as per DIN ISO 14001).

**2022**

The Riedel Group has relocated its logistics center for the Riedel, Nachtmann and Spiegelau brands to Weiden. The state-of-the-art logistics center is in full operation since September 2022.

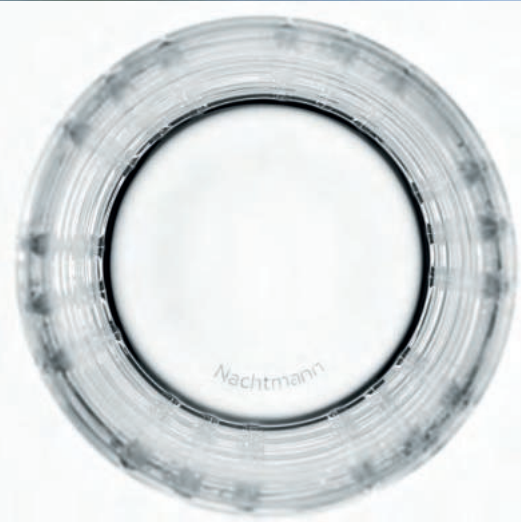
**2024**

Nachtmann is celebrating its 190th anniversary.

## The best of Made in Germany

Respecting our past, we actively shape our future. With an artisan heritage stretching back 190 years, we are pioneering environmental technology at among one of Europe's most modern plants. Here, in the best German tradition, we combine craftsmanship with rigid quality control, new technology and a passion for perfection.

Reflecting our long established commitment to sustainability and environmentally friendly operations, we renewed our DIN ISO 14001 certification in 2010. This acknowledges our introduction of leading environmental management practices since 2001.



## **THAT GEN. THIS GEN. NEXTGEN.**

Nachtmann's heritage as a Bavarian glassmaker stretches back over two centuries. We respect our past, of course, but we are eager to shape our future. Looking ahead, we are on a constant quest to find the next generation of talented glassware designers. This search takes us to our own design studios and to leading art colleges around the world. So far, we have tapped into young design talent in Tokyo, New York, Stockholm and Prague. The results have been creatively and commercially uplifting.

Fusing cutting-edge ideas with traditional craft skills, we are creating the next generation of modern classics in glass.

## **Competition and Collaboration. How NEXTGEN works.**

World-leading design colleges are invited to take part and to nominate a group of students. Together with the Nachtmann team, independent product designer Stefanie Kubanek then sets the brief, and takes the students on a factory tour. During an intense and prolonged design and development phase, the winning design then proceeds from idea to finished product.



PUNK © Designed by  
Anke Büchmann, 2017

# HOW TO DISTINGUISH A PERFECT GLASS

## FINE AND LASER CUT RIM:

elegant look  
smooth, lip contact  
directs the flow of wine  
less chipping

## BOWL:

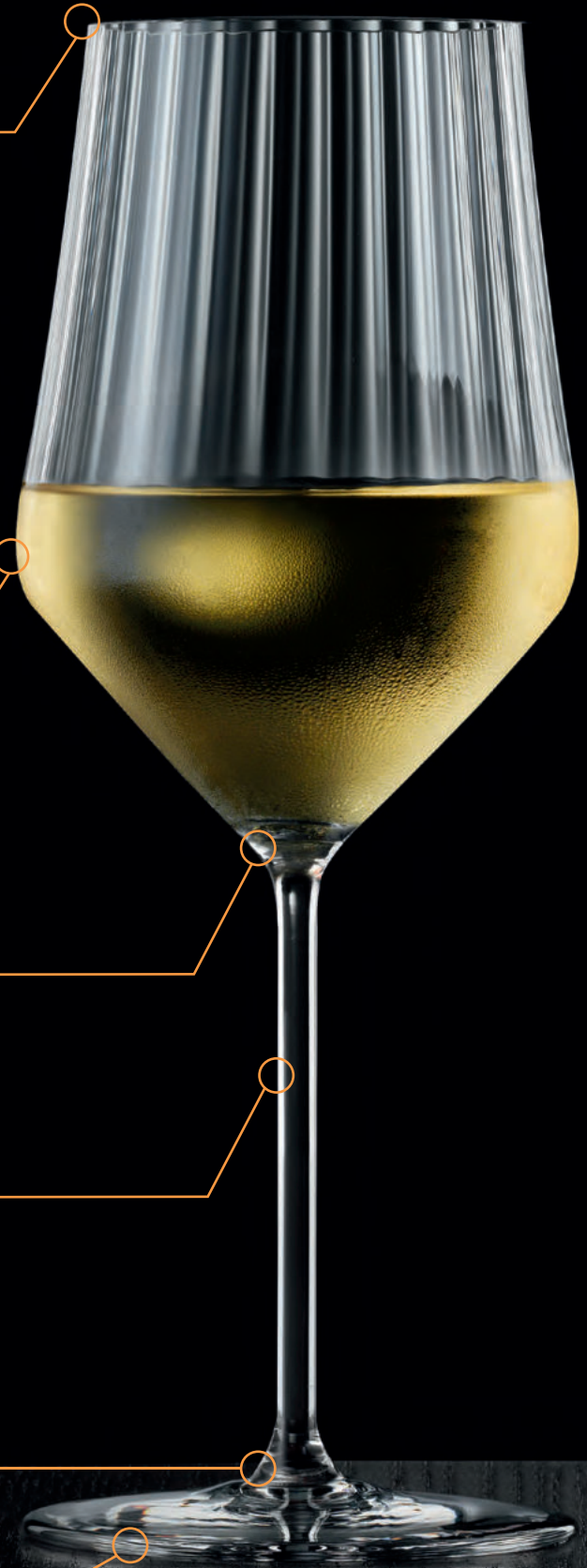
Colorless and transparent bowl  
allows wines to express their  
true visual characteristics

Perfect connection reduces breakage

Seamless or nearby seamless stems  
provide a premium tactile experience

Enforced foot for improved durability

No sharp rims and a flat base improve  
esthetics and stability



# OUR COMMUNITY

Welcome to the world of Nachtmann - LUXURY EVERY DAY.

Our social media channels showcase our collection in all its variety, offering inspiration for every occasion. Discover trends, get inspired, and find the perfect glasses for your enjoyment. Join our community today!

## Facebook

[www.facebook.com/glasersteller](http://www.facebook.com/glasersteller)



## Instagram

[www.instagram.com/nachtmann\\_de](http://www.instagram.com/nachtmann_de)



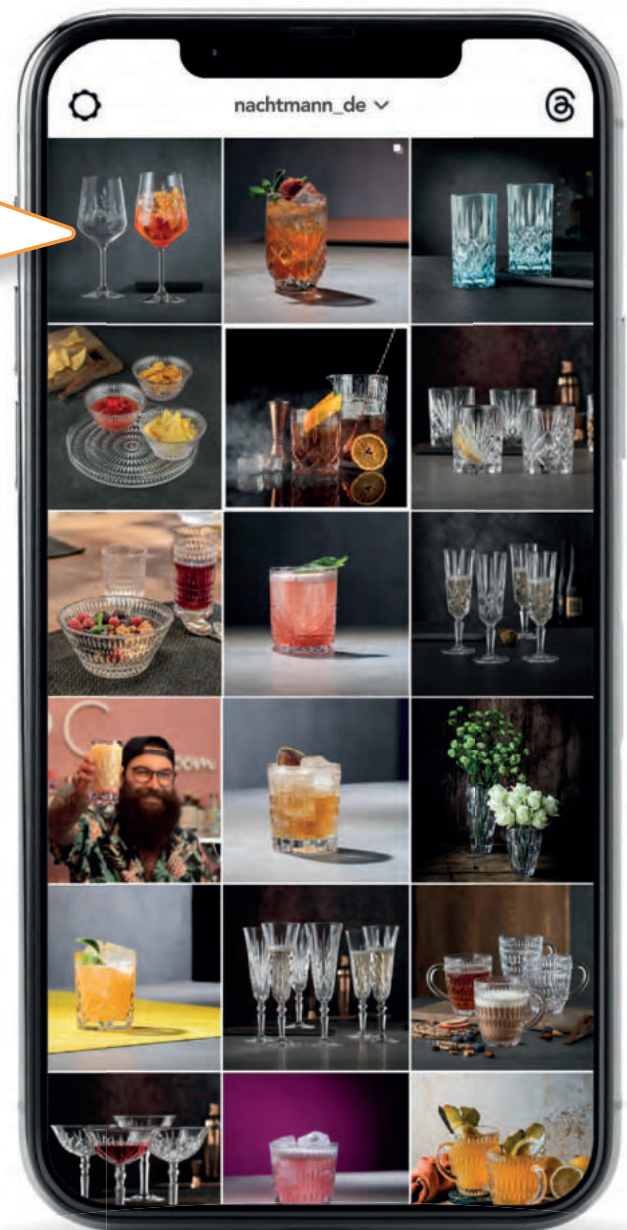
## LinkedIn

<https://de.linkedin.com/company/nachtmann-fine-bavarian-crystal>



## Pinterest

[www.pinterest.de/Nachtmann\\_Glasersteller](http://www.pinterest.de/Nachtmann_Glasersteller)



# APERITIVO

## NACHTMANN APERITIVO THE TASTE OF THE EVENING

Aperitivo – the most beautiful transition of the day  
The name is more than just a word – Aperitivo stands for a Mediterranean tradition full of zest for life.



### TUMBLER

(668/188)

↓ 97 mm | 3 5/6"

Ø 86 mm | 3 2/5"

370 ml | 13 oz

BU/P: 384

BU/L: 48

**H 105578** BU/MP: 4  
SET/2



### LONGDRINK

(668/91)

↓ 149 mm | 5 6/7"

Ø 76 mm | 3"

395 ml | 14 oz

BU/P: 288

BU/L: 48

**H 105577** BU/MP: 4  
SET/2



### SPRITZ/ RED WINE GLASS

(426/39)

↓ 240 mm | 9 4/9"

Ø 99 mm | 3 8/9"

640 ml | 22 4/7 oz

BU/P: 196

BU/L: 28

**H 105600** BU/MP: 4  
SET/2



### UNIVERSAL/ WHITE WINE GLASS

(426/32)

↓ 235 mm | 9 1/4"

Ø 89 mm | 3 1/2"

490 ml | 17 2/7 oz

BU/P: 280

BU/L: 40

**H 105729** BU/MP: 4  
SET/2



### BOWL 15 CM

(668/1/15cm)

↓ 60 mm | 2 1/3"

Ø 150 mm | 6"

505 ml | 17 4/5 oz

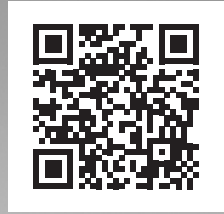
BU/P: 280

BU/L: 56

**H 105576** BU/MP: 4  
SET/2



BU/P: BILL UNITS/PALLET | BU/L: BILL UNITS/LAYER



Video





**GERMAN  
DESIGN  
AWARD  
WINNER  
2026**



# NACHTMANN BARISTA ETHNO/NOBLESSE

Visual impact plays a huge role in enhancing the pleasures of the palate – and coffee is no exception. Now the NACHTMANN Barista Collection offers the perfect glass for every kind of speciality coffee.



**ESPRESSO / DOPPIO**  
(661/305)  
‡ 63 mm | 2 1/2"  
Ø 64 mm | 2 1/2"  
90 ml | 3 1/6 oz

BU/P: 2112  
BU/L: 192

**H 104965** BU/MP: 12  
PC



**CAPPUCCINO /  
FLAT WHITE**  
(661/350)  
‡ 90 mm | 3 1/2"  
Ø 83 mm | 3 1/4"  
235 ml | 8 2/7 oz

BU/P: 864  
BU/L: 96

**H 104966** BU/MP: 12  
PC



**COFFEE MUG /  
HOT BEVERAGE MUG**  
(661/28)  
‡ 107 mm | 4 1/5"  
Ø 125 mm | 5"  
392 ml | 13 5/6 oz

BU/P: 504  
BU/L: 72

**H 104301** BU/MP: 12  
PC



**LATTE MACCHIATO**  
(661/91)  
‡ 151 mm | 6"  
Ø 77 mm | 3"  
422 ml | 14 8/9 oz

BU/P: 540  
BU/L: 108

**H 105187** BU/MP: 12  
PC



**ESPRESSO / DOPPIO**  
(617/305)  
‡ 63 mm | 2 1/2"  
Ø 64 mm | 2 1/2"  
90 ml | 3 1/6 oz

BU/P: 2112  
BU/L: 192

**H 104964** BU/MP: 12  
PC



**CAPPUCCINO /  
FLAT WHITE**  
(617/350)  
‡ 90 mm | 3 1/2"  
Ø 83 mm | 3 1/4"  
235 ml | 8 2/7 oz

BU/P: 864  
BU/L: 96

**H 104967** BU/MP: 12  
PC



**COFFEE MUG /  
HOT BEVERAGE MUG**  
(617/28)  
‡ 116 mm | 4 4/7"  
Ø 119 mm | 4 2/3"  
347 ml | 12 1/2 oz

BU/P: 792  
BU/L: 72

**H 103807** BU/MP: 12  
PC



**LATTE MACCHIATO**  
(617/347)  
‡ 147 mm | 5 4/5"  
Ø 75 mm | 3"  
350 ml | 12 1/3 oz

BU/P: 1080  
BU/L: 120

**H 105188** BU/MP: 12  
PC

# BOSSA NOVA EDITION **NEW**



## WINE GLASS

(7895/02)

‡ 208 mm | 8 1/5"

Ø 80 mm | 3 1/7"

435 ml | 15 1/3 oz

BU/P: 384

BU/L: 48

**H 106688** BU/MP: 3

SET/2



## COCKTAIL GLASS

(7895/08)

‡ 144 mm | 5 2/3"

Ø 108 mm | 4 1/4"

252 ml | 8 8/9 oz

BU/P: 330

BU/L: 30

**H 106162** BU/MP: 3

SET/2



## TUMBLER

(7895/41)

‡ 100 mm | 4"

Ø 78 mm | 3"

360 ml | 12 2/3 oz

BU/P: 798

BU/L: 57

**H 106164** BU/MP: 3

SET/2

Modern Design. Nachtmann DNA –  
reimagined for today.

The Bossa Nova Edition unites the core values of NACHTMANN - decorative elements, fine crystal glass, distinctive cut detailing, and impressive brilliance - with a clear, contemporary design language. Its signature Bossa Nova weave pattern, featured in the stem or baseplate, creates bold aesthetic accents and turns each piece into a contemporary design statement.





# BOSSA NOVA

The Bossa Nova series offers barware and tableware with the same cool sensibility as the dance for which it is named. The collection adds interest to its clear glass collection with a textural basketweave design to seduce the fingertips.



## SOF

(632/14)

↓ 85 mm | 3 1/3"  
 Ø 82 mm | 3 2/9"  
 235 ml | 8 2/7 oz

BU/P: 864  
 BU/L: 96

**H 103039** BU/MP: 12  
 PC



## WHISKY TUMBLER

(632/71)

↓ 101 mm | 4"  
 Ø 86 mm | 3 2/5"  
 330 ml | 11 2/3 oz

BU/P: 672  
 BU/L: 96

**H 92054** BU/MP: 12  
 PC



## LONGDRINK

(632/91)

↓ 151 mm | 6"  
 Ø 81 mm | 3 1/5"  
 399 ml | 14 oz

BU/P: 432  
 BU/L: 108

**H 92055** BU/MP: 12  
 PC



## PITCHER

(632/77)

↓ 232 mm | 9 1/7"  
 Ø 126 mm | 5"  
 1160 ml | 41 oz

BU/P: 280  
 BU/L: 40

**H 92074** BU/MP: 4  
 PC



## SOF

(632/14)

↓ 85 mm | 3 1/3"  
 Ø 82 mm | 3 2/9"  
 235 ml | 8 2/7 oz

BU/P: 864  
 BU/L: 96

**H 103039** BU/MP: 12  
 PC



## WHISKY TUMBLER

(632/71)

↓ 101 mm | 4"  
 Ø 86 mm | 3 2/5"  
 330 ml | 11 2/3 oz

BU/P: 672  
 BU/L: 96

**H 92054** BU/MP: 12  
 PC



## LONGDRINK

(632/91)

↓ 151 mm | 6"  
 Ø 81 mm | 3 1/5"  
 399 ml | 14 oz

BU/P: 432  
 BU/L: 108

**H 92055** BU/MP: 12  
 PC

# BOSSA NOVA



1)

2)

WHISKY (7590/3tlg)

1) 1x Decanter 0,75L

‡ 257 mm | 10 1/8"

Ø 91 mm | 3 4/7"

750 ml | 26 1/2 oz

BU/P: 112

BU/L: 28

**H 101095** BU/MP: 4

SET/3

2) 2x Whisky Tumbler

‡ 101 mm | 4"

Ø 86 mm | 3 2/5"

330 ml | 11 2/3 oz



BU/P: BILL UNITS/PALLET | BU/L: BILL UNITS/LAYER



# BOSSA NOVA



DIP BOWL SQUARE

8,5 CM

(4326/8,5cm)

↑ 36 mm | 1 3/7"

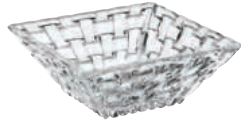
Ø 85 mm | 3 1/3"

↔ 85 mm | 3 1/3"

BU/P: 384

BU/L: 48

**H 97631** BU/MP: 3  
SET/4



BOWL SQUARE

12 CM

(4326/12cm)

↑ 47 mm | 1 6/7"

Ø 120 mm | 4 5/7"

↔ 120 mm | 4 5/7"

BU/P: 368

BU/L: 46

**H 89694** BU/MP: 2  
SET/2



BOWL RECTANGULAR

17 CM

(4427/17cm)

↑ 36 mm | 1 3/7"

Ø 170 mm | 6 2/3"

↔ 85 mm | 3 1/3"

BU/P: 432

BU/L: 48

**H 97783** BU/MP: 3  
SET/2



# BOSSA NOVA



DIP BOWL ROUND  
10 CM

(4460/9,8cm)  
‡ 57 mm | 2 1/4"  
Ø 98 mm | 3 6/7"  
210 ml | 7 2/5 oz

BU/P: 936  
BU/L: 72

**H 101207** BU/MP: 6  
PC

DISCONTINUED 2026\*



BOWL ROUND  
15 CM

(4460/15cm)  
‡ 80 mm | 2 1/4"  
Ø 150 mm | 6"  
750 ml | 26 1/2 oz

BU/P: 168  
BU/L: 56

**H 102253** BU/MP: 4  
SET/2



BOWL 21 CM

(4107/21cm)  
‡ 33 mm | 1 2/7"  
Ø 210 mm | 8 1/4"

BU/P: 184  
BU/L: 46

**H 99681** BU/MP: 2  
SET/2



BOWL 25 CM

(4107/25)  
‡ 50 mm | 2"  
Ø 250 mm | 9 5/6"

BU/P: 96  
BU/L: 32

**H 77672** BU/MP: 2  
PC



BOWL 30 CM

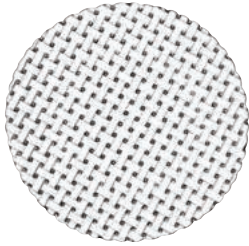
(4107/30cm)  
‡ 83 mm | 3 1/4"  
Ø 300 mm | 11 4/5"

BU/P: 60  
BU/L: 20

**H 77688** BU/MP: 2  
PC



# BOSSA NOVA



SALAD PLATE 23 CM

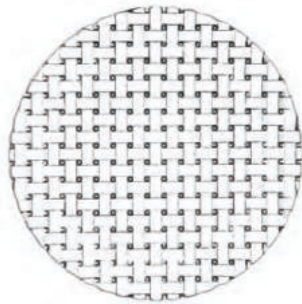
(4146/23cm)

↓ 18 mm | 5/7"

Ø 230 mm | 9"

BU/P: 304  
BU/L: 76

**H 98036** BU/MP: 4  
SET/2



**NEW**

PLATE 28 CM

(4126/28cm)

↓ 13 mm | 1/2"

Ø 280 mm | 11"

BU/P: 168  
BU/L: 56

**H 106617** BU/MP: 4  
SET/2

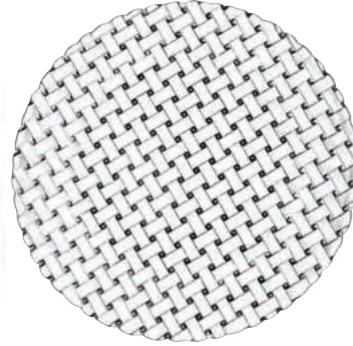


PLATE LARGE 32 CM

(4146/32cm)

↓ 18 mm | 5/7"

Ø 320 mm | 12 3/5"

BU/P: 132  
BU/L: 44

**H 89994** BU/MP: 4  
SET/2



PLATE SMALL 23 CM

(4092/23cm)

↓ 20 mm | 4/5"

Ø 230 mm | 9"

BU/P: 304  
BU/L: 76

**H 98035** BU/MP: 4  
SET/2



DINNER PLATE 27 CM

(4092/27cm)

↓ 23 mm | 1"

Ø 270 mm | 10 5/8"

BU/P: 156  
BU/L: 52

**H 98028** BU/MP: 4  
SET/2

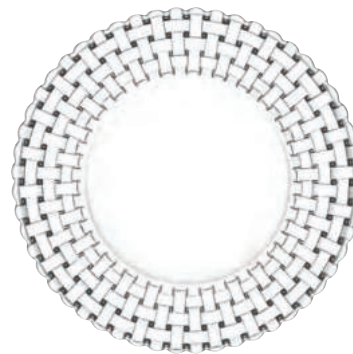


PLATE LARGE 32 CM

(4092/32cm)

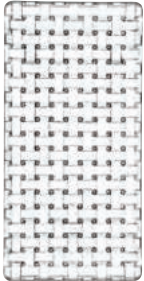
↓ 22 mm | 6/7"

Ø 320 mm | 12 3/5"

BU/P: 216  
BU/L: 72

**H 91303** BU/MP: 6  
PC

# BOSSA NOVA



RECTANGULAR PLATE  
28 CM

(4198/28cm)

↑ 23 mm | 1"

Ø 280 mm | 11"

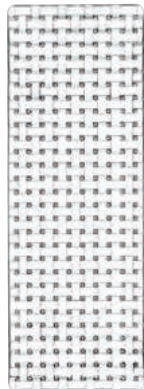
↔ 140 mm | 5 1/2"

BU/P: 384

BU/L: 96

**H 91316** BU/MP: 6

PC



RECTANGULAR PLATE  
42 CM

(4198/42cm)

↑ 24 mm | 1"

Ø 420 mm | 16 1/2"

↔ 150 mm | 6"

BU/P: 240

BU/L: 40

**H 81412** BU/MP: 2

PC



SQUARE PLATTER  
14 CM

(4197/14cm)

↑ 16 mm | 5/8"

Ø 140 mm | 5 1/2"

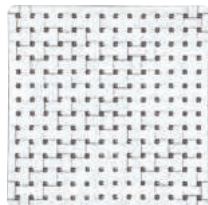
↔ 140 mm | 5 1/2"

BU/P: 1152

BU/L: 288

**H 101930** BU/MP: 12

PC



SQUARE PLATTER  
21 CM

(4197/21cm)

↑ 18 mm | 5/7"

Ø 210 mm | 8 1/4"

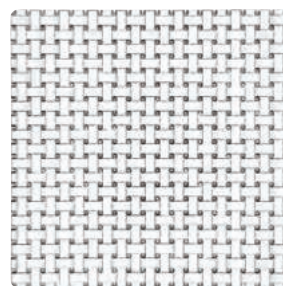
↔ 210 mm | 8 1/4"

BU/P: 300

BU/L: 60

**H 97632** BU/MP: 4

SET/2



SQUARE PLATTER  
28 CM

(4197/28cm)

↑ 23 mm | 1"

Ø 280 mm | 11"

↔ 280 mm | 11"

BU/P: 240

BU/L: 120

**H 91315** BU/MP: 6

PC





# BOSSA NOVA



1) 2)

## SERVING SET 3 PCS

(7377/3tlg)

1) 1x Plate Rectangular

↓ 23 mm | 1"

Ø 280 mm | 11"

↔ 140 mm | 5 1/2"

2) 2x Bowl Square

↓ 47 mm | 1 6/7"

Ø 120 mm | 4 5/7"

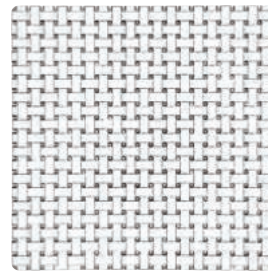
↔ 120 mm | 4 5/7"

BU/P: 120

BU/L: 24

**H 90026** BU/MP: 4

SET/3



1) 2)

## SERVING SET 5 PCS

(7378/5tlg)

1) 1x Square Plate

↓ 23 mm | 1"

Ø 280 mm | 11"

↔ 280 mm | 5 1/2"

2) 4x Bowl Square

↓ 47 mm | 1 6/7"

Ø 120 mm | 4 5/7"

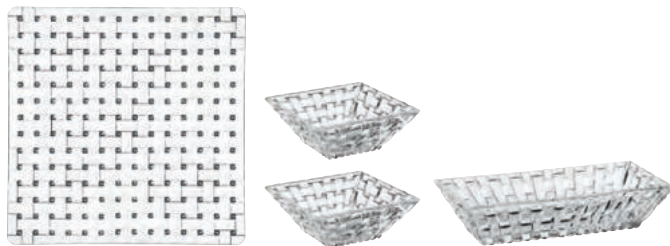
↔ 120 mm | 4 5/7"

BU/P: 64

BU/L: 32

**H 90023** BU/MP: 4

SET/5



1) 2) 3)

## SERVING SET 4 PCS (7453/4tlg)

1) 1x Square Plate

↓ 18 mm | 5/7"

Ø 210 mm | 8 1/4"

↔ 210 mm | 8 1/4"

2) 2x Bowl Square

↓ 36 mm | 1 3/7"

Ø 85 mm | 3 1/3"

↔ 85 mm | 3 1/3"

3) 1x Bowl Rectangular

↓ 36 mm | 1 3/7"

Ø 170 mm | 6 2/3"

↔ 85 mm | 3 1/3"

BU/P: 180

BU/L: 45

**H 97633** BU/MP: 3

SET/4



# BOSSA NOVA



## CAKE PLATE/ CHIP AND DIP 32 CM

(4126/32cm)  
 † 73 mm | 3 1/2"  
 Ø 320 mm | 12 3/5"

BU/P: 48  
 BU/L: 24

**H 77809** BU/MP: 2  
 PC



## DOME FOR CAKE PLATE 30 CM

(2749/30)  
 † 185 mm | 7 2/7"  
 Ø 302 mm | 11 8/9"

BU/P: 60  
 BU/L: 6

**H 99529** BU/MP: -  
 PC



## FOOTED CAKE PLATE 32 CM WITH DOME 30 CM (7502/2tlg)

1) 1x Dome	2) 1x Footed Cake Plate
† 185 mm   7 2/7"	† 88 mm   3 1/2"
Ø 302 mm   11 8/9"	Ø 320 mm   12 3/5"

BU/P: 42  
 BU/L: 6

**H 99528** BU/MP: 1  
 PC



## TWO TIER TRAY LARGE

(4126/32cm+23cm)  
 † 206 mm | 8 1/9"  
 Ø a) 320 mm | 12 3/5"  
 b) 230 mm | 9"

BU/P: 88  
 BU/L: 44

**H 78538** BU/MP: 2  
 PC

# BOSSA NOVA



VASE 16 CM

(4130/16 cm)  
↓ 157 mm | 6 1/6"  
Ø 62 mm | 2 4/9"

BU/P: 700  
BU/L: 140

**H 82087** BU/MP: 4  
PC



VASE 20 CM

(4130/20 cm)  
↓ 200 mm | 7 7/8"  
Ø 96 mm | 3 7/9"

BU/P: 288  
BU/L: 48

**H 82088** BU/MP: 4  
PC



VASE 28 CM

(4055/28 cm)  
↓ 280 mm | 11"  
Ø 110 mm | 4 1/3"

BU/P: 150  
BU/L: 50

**H 80727** BU/MP: 2  
PC



VASE 28 CM

(4056/28 cm)  
↓ 280 mm | 11"  
Ø 143 mm | 5 5/8"

BU/P: 112  
BU/L: 28

**H 80729** BU/MP: 2  
PC





# CELEBRATION

The Gin & Tonic glass is perfect for allowing gin lovers to enjoy the full aromatic expression of the gin's botanicals. With its large bowl and elegant stem, these undecorated glasses are the perfect modern addition to any cocktail lovers' home.



## GIN & TONIC

(7886/0)

‡ 222 mm | 8 3/4"

Ø 105 mm | 4 1/7"

640 ml | 22 4/7 oz

BU/P: 420

BU/L: 60

**H 102946** BU/MP: 12  
PC



DISCONTINUED 2026\*

## BEER GLASS

(7886/55)

‡ 172 mm | 6 7/9"

Ø 87 mm | 3 3/7"

380 ml | 13 2/5 oz

BU/P: 960

BU/L: 96

**H 105250** BU/MP: 12  
PC

# NACHTMANN ETHNO

From breakfast to cocktail hour, the new NACHTMANN Ethno range oozes mellow style. Machine-made in high quality crystal glass, its cut design adds a luxurious twist.

Tactile without overcrowding the product, the distinctive repetitive pattern allows the crystal to refract and shine under light. The Nachtmann Ethno is a collection for all occasions.



NEW

## WATER GLASS

(661/350)

↓ 90 mm | 3 1/2"

Ø 83 mm | 3 1/4"

235 ml | 8 2/7 oz

BU/P: 864

BU/L: 96

**H 104966** BU/MP: 12

PC



## TUMBLER

(661/71)

↓ 99 mm | 3 8/9"

Ø 82 mm | 3 2/9"

304 ml | 10 5/7 oz

BU/P: 768

BU/L: 96

**H 104299** BU/MP: 12

PC



## LONGDRINK

(661/91)

↓ 151 mm | 6"

Ø 77 mm | 3"

422 ml | 14 8/9 oz

BU/P: 540

BU/L: 108

**H 105187** BU/MP: 12

PC



## HOT BEVERAGE MUG

(661/28)

↓ 107 mm | 4 1/5"

Ø 125 mm | 5"

392 ml | 13 5/6 oz

BU/P: 504

BU/L: 72

**H 104301** BU/MP: 12

PC



## TUMBLER

(661/71)

↓ 99 mm | 3 8/9"

Ø 82 mm | 3 2/9"

304 ml | 10 5/7 oz

BU/P: 768

BU/L: 96

**H 104299** BU/MP: 12

PC



## LONGDRINK

(661/91)

↓ 151 mm | 6"

Ø 77 mm | 3"

422 ml | 14 8/9 oz

BU/P: 540

BU/L: 108

**H 105187** BU/MP: 12

PC



## CARAFE

(661/153)

↓ 270 mm | 10 5/8"

Ø 94 mm | 3 2/3"

1113 ml | 39 1/4 oz

BU/P: 216

BU/L: 72

**H 105396** BU/MP: 4

PC

# NACHTMANN ETHNO



**NEW**

DECANTER (7619/3tlg)

1) 1x Decanter 0,75L

‡ 260 mm | 10 1/4"

Ø 100 mm | 4"

750 ml | 26 1/2 oz

2) 2x Tumbler

‡ 99 mm | 3 8/9"

Ø 82 mm | 3 2/9"

304 ml | 10 5/7 oz

BU/P: 126

BU/L: 18

**H 106157** BU/MP: 3  
SET/3



BU/P: BILL UNITS/PALLET | BU/L: BILL UNITS/LAYER







# NACHTMANN ETHNO



PLATE 23 CM

(661/2/23cm)  
 † 18 mm | 5/7"  
 Ø 230 mm | 9"

BU/P: 304  
 BU/L: 76

**H 106160** BU/MP: 4  
 SET/2



**NEW**

PLATE 28 CM

(661/2/28cm)  
 † 13 mm | 1/2"  
 Ø 280 mm | 11"

BU/P: 168  
 BU/L: 56

**H 106618** BU/MP: 4  
 SET/2



PLATE 32 CM

(661/2/32cm)  
 † 18 mm | 5/7"  
 Ø 320 mm | 12 3/5"

BU/P: 132  
 BU/L: 44

**H 106161** BU/MP: 4  
 SET/2



PLATE 22 CM

(661/4/22cm)  
 † 20 mm | 4/5"  
 Ø 220 mm | 8 2/3"  
 385 ml | 13 4/7 oz

BU/P: 630  
 BU/L: 90

**H 105817** BU/MP: 6  
 PC



SERVING SET 4 PCS

(7613/4tlg.)

1.) 1X PLATE 22 CM      2.) 3X BOWL 11 CM

† 20 mm | 4/5"      † 52 mm | 2"  
 Ø 220 mm | 8 2/3"      Ø 110 mm | 4 1/3"  
 385 ml | 13 4/7 oz      190 ml | 6 5/7 oz

BU/P: 225  
 BU/L: 45

**H 105766** BU/MP: 3  
 SET/4



# NACHTMANN ETHNO



## BOWL 11 CM

(661/1/11cm)

‡ 52 mm | 2"

Ø 110 mm | 4 1/3"

190 ml | 6 5/7 oz

BU/P: 1440

BU/L: 360

**H 105419** BU/MP: 6

PC



## BOWL 16 CM

(661/1/16cm)

‡ 78 mm | 3"

Ø 165 mm | 6 1/2"

755 ml | 26 5/8 oz

BU/P: 504

BU/L: 168

**H 104985** BU/MP: 6

PC



## BOWL 27 CM

(661/1/27cm)

‡ 90 mm | 3 1/2"

Ø 275 mm | 10 5/6"

2385 ml | 84 1/8 oz

BU/P: 128

BU/L: 16

**H 105230** BU/MP: 2

PC



**NEW**

## BOWL 25 CM

(661/3/25cm)

‡ 50 mm | 2"

Ø 250 mm | 9 4/5"

1050 ml | 37 oz

BU/P: 96

BU/L: 32

**H 106615** BU/MP: 2

PC



**NEW**

## BOWL 30 CM

(661/3/30cm)

‡ 83 mm | 3 1/4"

Ø 300 mm | 11 4/5"

2680 ml | 94 1/2 oz

BU/P: 60

BU/L: 20

**H 106616** BU/MP: 2

PC

# NACHTMANN ETHNO



NEW

VASE/HURRICANE LAMP

23 CM

(661/97/23cm)

‡ 231 mm | 9"

Ø 120 mm | 4 5/7"

BU/P: 240

BU/L: 40

H 106018 BU/MP: 2

PC



NEW

VASE/HURRICANE LAMP

28 CM

(661/97/28cm)

‡ 281 mm | 11"

Ø 146 mm | 5 3/4"

BU/P: 72

BU/L: 24

H 106381 BU/MP: 2

PC



# NACHTMANN ETHNO BLACK EDITION



Dishwasher safe.  
For 500 plus cycles.



## WHISKY TUMBLER BLACK

(661/71)

‡ 99 mm | 3 8/9"

Ø 82 mm | 3 2/9"

304 ml | 10 5/7 oz

BU/P: 768

BU/L: 96

**H 105445** BU/MP: 12

PC



# NACHTMANN ETHNO COLORS



Dishwasher safe.  
For 500 plus cycles.



TUMBLER  
VINTAGE BLUE

(661/71)  
‡ 99 mm | 3 8/9"  
Ø 82 mm | 3 2/9"  
304 ml | 10 5/7 oz

BU/P: 408  
BU/L: 51

**H 105389** BU/MP: 3  
SET/2



TUMBLER  
MINT

(661/71)  
‡ 99 mm | 3 8/9"  
Ø 82 mm | 3 2/9"  
304 ml | 10 5/7 oz

BU/P: 408  
BU/L: 51

**H 105388** BU/MP: 3  
SET/2



BOWL VINTAGE BLUE  
16 CM

(661/1/16cm)  
‡ 78 mm | 3"  
Ø 165 mm | 6 1/2"  
755 ml | 26 5/8 oz

BU/P: 240  
BU/L: 48

**H 105391** BU/MP: 4  
PC



BOWL MINT  
16 CM

(661/1/16cm)  
‡ 78 mm | 3"  
Ø 165 mm | 6 1/2"  
755 ml | 26 5/8 oz

BU/P: 240  
BU/L: 48

**H 105390** BU/MP: 4  
PC

# NACHTMANN HERITAGE

NEW



## WINE GLASS

(27111/02)

↓ 232 mm | 9 1/7"

Ø 89 mm | 3 1/2"

468 ml | 16 1/2 oz

BU/P: 336

BU/L: 48

**H 106720** BU/MP: 4  
SET/2



## CHAMPAGNE GLASS

(27111/07)

↓ 230 mm | 9"

Ø 62 mm | 2 4/9"

230 ml | 8 1/9 oz

BU/P: 392

BU/L: 56

**H 106721** BU/MP: 4  
SET/2



## TUMBLER

(4501)

↓ 93 mm | 3 2/3"

Ø 88 mm | 3 1/2"

300 ml | 10 4/7 oz

BU/P: 672

BU/L: 48

**H 106722** BU/MP: 4  
SET/2

HERITAGE builds directly on NACHTMANN's historical strengths: decorative crystal, radiant light reflections, and timeless elegance.

The collection intentionally embraces this distinctive DNA and translates it into a modern, clearly defined design language that references classic crystal aesthetics without appearing nostalgic.



# HIGHLAND

The Highland series is perfect for dinner parties as they feature four individual designs in each set: Cross, Diamond, Square and Straight. Classical yet distinctive in design, they are a true expression of lifestyle. These high-quality, stylish glasses add a touch of luxury and sparkle to your home bar or table-setting.



## TUMBLER (7435/4tlg.)

↑ 102 mm | 4"  
Ø 82 mm | 3 2/9"  
345 ml | 12 1/6 oz  
BU/P: 672  
BU/L: 96

1) 2) 3) 4)

- 1) TUMBLER CROSS / PC  
**H 96089** BU/MP: 12
- 2) TUMBLER STRAIGHT / PC  
**H 96090** BU/MP: 12
- 3) TUMBLER SQUARE / PC  
**H 96091** BU/MP: 12
- 4) TUMBLER DIAMOND / PC  
**H 96092** BU/MP: 12



## LONGDRINK (7454/4tlg.)

↑ 151 mm | 6"  
Ø 77 mm | 3"  
445 ml | 15 2/3 oz  
BU/P: 432  
BU/L: 108

5) 6) 7) 8)

- 5) LONGDRINK CROSS / PC  
**H 98232** BU/MP: 12
- 6) LONGDRINK STRAIGHT / PC  
**H 98233** BU/MP: 12
- 7) LONGDRINK SQUARE / PC  
**H 98234** BU/MP: 12
- 8) LONGDRINK DIAMOND / PC  
**H 98235** BU/MP: 12



DISCONTINUED 2026\*

## TUMBLER RESEDA (637/71)

↑ 102 mm | 4"  
Ø 82 mm | 3 2/9"  
345 ml | 12 1/6 oz

BU/P: 672  
BU/L: 96

**H 97444** BU/MP: 4  
PC



DISCONTINUED 2026\*

## TUMBLER AQUA (635/71)

↑ 102 mm | 4"  
Ø 82 mm | 3 2/9"  
345 ml | 12 1/6 oz

BU/P: 672  
BU/L: 96

**H 97442** BU/MP: 4  
PC



## TUMBLER SMOKE (636/71)

↑ 102 mm | 4"  
Ø 82 mm | 3 2/9"  
345 ml | 12 1/6 oz

BU/P: 672  
BU/L: 96

HORECA ONLY  
**H 97439** BU/MP: 12  
PC

\*DISCONTINUED 2026 / AS LONG AS STOCK LASTS

BU/P: BILL UNITS/PALLET | BU/L: BILL UNITS/LAYER

# HIGHLAND



1)



2)

## DECANTER 0,75L

(637/70/0,75l)

‡ 244 mm | 9 3/5"

Ø 99 mm | 3 8/9"

750 ml | 26 1/2 oz

BU/P: 180

BU/L: 60

**H 96826** BU/MP: 4  
PC

## WHISKY (7473/5tlg)

1) 1x Decanter 0,75L

‡ 244 mm | 9 3/5"

Ø 99 mm | 3 8/9"

750 ml | 26 1/2 oz

BU/P: 72

BU/L: 24

**H 98196** BU/MP: 3  
SET/5

2) 4x Whisky Tumbler

‡ 102 mm | 4"

Ø 82 mm | 3 2/9"

345 ml | 12 1/6 oz

BU/P: BILL UNITS/PALLET | BU/L: BILL UNITS/LAYER







## TUMBLER

(651/71)

‡ 97 mm | 3 5/6"

Ø 78 mm | 3"

305 ml | 10 3/4 oz

BU/P: 768

BU/L: 96

**H 102082** BU/MP: 12

PC



## LONGDRINK

(651/91)

‡ 148 mm | 5 5/6"

Ø 73 mm | 2 7/8"

375 ml | 13 2/9 oz

BU/P: 972

BU/L: 108

**H 102081** BU/MP: 12

PC

The Jules series was developed in 2018 as part of the NACHTMANN NEXTGEN Project, created by Australian design student Oliver Bryant. Jules designer Oliver Bryant came from the University of Technology in Sydney.

The series was inspired by the inherent tension between strength and refinement in jet turbines. When in flight, a jet gathers and distorts the air, and this is mirrored by the way the curves of the pattern gather and refract light.

# MINERVA

Tall and impressive, Minerva crystal vases from NACHTMANN stand proud as a stunning decorative centrepiece. The classic design of the Minerva vases will charm any space with its regal elegance, and the heavy base offers the stability and space to accommodate generous floral arrangements.



FOOTED VASE  
32 CM

(651/81/32cm)  
‡ 313 mm | 12 1/3"  
Ø 180 mm | 7"

BU/P: 48  
BU/L: 12

**H 103634** BU/MP: 1  
PC



FOOTED VASE  
40 CM

(651/81/40cm)  
‡ 403 mm | 15 6/7"  
Ø 160 mm | 6 2/7"

BU/P: 48  
BU/L: 24

**H 103635** BU/MP: 1  
PC



FOOTED VASE  
IN GOLD 32 CM

(651/81/32cm)  
‡ 313 mm | 12 1/3"  
Ø 180 mm | 7"

BU/P: 48  
BU/L: 12

**H 104160** BU/MP: 1  
PC



FOOTED VASE  
IN GOLD 40 CM

(651/81/40cm)  
‡ 403 mm | 15 6/7"  
Ø 160 mm | 6 2/7"

BU/P: 48  
BU/L: 24

**H 104163** BU/MP: 1  
PC



FOOTED VASE  
IN PLATINUM  
32 CM

(651/81/32cm)  
‡ 313 mm | 12 1/3"  
Ø 180 mm | 7"

BU/P: 48  
BU/L: 12

**H 104161** BU/MP: 1  
PC



FOOTED VASE  
IN PLATINUM  
40 CM

(651/81/40cm)  
‡ 403 mm | 15 6/7"  
Ø 160 mm | 6 2/7"

BU/P: 48  
BU/L: 24

**H 104165** BU/MP: 1  
PC



# NOBLESSE

Beautifully cut from the finest crystal, the glasses are a must-have for anyone who wants to bring new lustre to their home bar.

They celebrate the revival of classic design while remaining modern with stunning colours.



**SHOT GLASS**  
(617/43)  
‡ 61 mm | 2 2/5"  
Ø 50 mm | 2"  
55 ml | 2 oz

BU/P: 1920  
BU/L: 192

**H 100695** BU/MP: 12  
PC



**SOF**  
(617/14)  
‡ 84 mm | 3 1/3"  
Ø 80 mm | 3 1/7"  
240 ml | 8 1/2 oz

BU/P: 768  
BU/L: 96

**H 98856** BU/MP: 12  
PC



**WHISKY TUMBLER**  
(617/71)  
‡ 102 mm | 4"  
Ø 82 mm | 3 2/9"  
295 ml | 10 2/5 oz

BU/P: 768  
BU/L: 96

**H 91710** BU/MP: 12  
PC



**LONGDRINK**  
(617/91)  
‡ 151 mm | 6"  
Ø 77 mm | 3"  
395 ml | 14 oz

BU/P: 432  
BU/L: 108

**H 91703** BU/MP: 12  
PC



**NEW**

**WATER GLASS**  
(617/350)  
‡ 90 mm | 3 1/2"  
Ø 83 mm | 3 1/4"  
235 ml | 8 2/7 oz

BU/P: 864  
BU/L: 96

**H 104967** BU/MP: 12  
PC



**SOF**  
(617/14)  
‡ 84 mm | 3 1/3"  
Ø 80 mm | 3 1/7"  
240 ml | 8 1/2 oz

BU/P: 768  
BU/L: 96

**H 98856** BU/MP: 12  
PC



**WHISKY TUMBLER**  
(617/71)  
‡ 102 mm | 4"  
Ø 82 mm | 3 2/9"  
295 ml | 10 2/5 oz

BU/P: 768  
BU/L: 96

**H 91710** BU/MP: 12  
PC



**LONGDRINK**  
(617/91)  
‡ 151 mm | 6"  
Ø 77 mm | 3"  
395 ml | 14 oz

BU/P: 432  
BU/L: 108

**H 91703** BU/MP: 12  
PC

# NOBLESSE



# NACHTMANN NOBLESSE BLACK EDITION



Dishwasher safe.  
For 500 plus cycles.



WHISKY TUMBLER  
BLACK  
(617/71)

↑ 102 mm | 4"

Ø 82 mm | 3 2/9"

295 ml | 10 2/5 oz

BU/P: 768

BU/L: 96

**H 105446** BU/MP: 12

PC



# JOHN WICK



DISCONTINUED 2026\*

## WHISKY TUMBLER

(617/71)

‡ 102 mm | 4"

Ø 82 mm | 3 2/9"

295 ml | 10 2/5 oz

RETAIL ONLY



# JOHN WICK®



\*DISCONTINUED 2026 / AS LONG AS STOCK LASTS

©, ™ & © 2025 Lions Gate Entertainment Inc.  
and related companies. All Rights Reserved.

LIONSGATE

# NOBLESSE COLORS



Dishwasher safe.  
For 500 plus cycles.



WHISKY TUMBLER  
AQUA  
(617/71)  
‡ 102 mm | 4"  
Ø 82 mm | 3 2/9"  
295 ml | 10 2/5 oz

BU/P: 408  
BU/L: 51

**H 104239** BU/MP: 3  
SET/2



DISCONTINUED 2026\*

WHISKY TUMBLER  
ROSÉ  
(617/71)  
‡ 102 mm | 4"  
Ø 82 mm | 3 2/9"  
295 ml | 10 2/5 oz

BU/P: 408  
BU/L: 51

**H 104240** BU/MP: 3  
SET/2



WHISKY TUMBLER  
MINT  
(617/71)  
‡ 102 mm | 4"  
Ø 82 mm | 3 2/9"  
295 ml | 10 2/5 oz

BU/P: 408  
BU/L: 51

**H 104241** BU/MP: 3  
SET/2



WHISKY TUMBLER  
TAUPE  
(617/71)  
‡ 102 mm | 4"  
Ø 82 mm | 3 2/9"  
295 ml | 10 2/5 oz

BU/P: 408  
BU/L: 51

**H 104242** BU/MP: 3  
SET/2



WHISKY TUMBLER  
VINTAGE BLUE  
(617/71)  
‡ 102 mm | 4"  
Ø 82 mm | 3 2/9"  
295 ml | 10 2/5 oz

BU/P: 408  
BU/L: 51

**H 104243** BU/MP: 3  
SET/2



WHISKY TUMBLER  
BERRY  
(617/71)  
‡ 102 mm | 4"  
Ø 82 mm | 3 2/9"  
295 ml | 10 2/5 oz

BU/P: 408  
BU/L: 51

**H 104244** BU/MP: 3  
SET/2



WHISKY TUMBLER  
SMOKE  
(617/71)  
‡ 102 mm | 4"  
Ø 82 mm | 3 2/9"  
295 ml | 10 2/5 oz

BU/P: 408  
BU/L: 51

**H 104245** BU/MP: 3  
SET/2



WHISKY TUMBLER  
TOBACCO  
(617/71)  
‡ 102 mm | 4"  
Ø 82 mm | 3 2/9"  
295 ml | 10 2/5 oz

BU/P: 408  
BU/L: 51

**H 104246** BU/MP: 3  
SET/2

\*DISCONTINUED 2026 / AS LONG AS STOCK LASTS

BU/P: BILL UNITS/PALLET | BU/L: BILL UNITS/LAYER





# NOBLESSE COLORS



Dishwasher safe.  
For 500 plus cycles.



**LONGDRINK  
AQUA**  
(617/91)  
‡ 151 mm | 6"  
Ø 77 mm | 3"  
395 ml | 14 oz

BU/P: 360  
BU/L: 60

**H 105710** BU/MP: 3  
SET/2



DISCONTINUED 2026\*

**LONGDRINK  
ROSÉ**  
(617/91)  
‡ 151 mm | 6"  
Ø 77 mm | 3"  
395 ml | 14 oz

BU/P: 360  
BU/L: 60

**H 105711** BU/MP: 3  
SET/2



**LONGDRINK  
MINT**  
(617/91)  
‡ 151 mm | 6"  
Ø 77 mm | 3"  
395 ml | 14 oz

BU/P: 360  
BU/L: 60

**H 105712** BU/MP: 3  
SET/2



**LONGDRINK  
TAUPE**  
(617/91)  
‡ 151 mm | 6"  
Ø 77 mm | 3"  
395 ml | 14 oz

BU/P: 360  
BU/L: 60

**H 105713** BU/MP: 3  
SET/2



**LONGDRINK  
VINTAGE BLUE**  
(617/91)  
‡ 151 mm | 6"  
Ø 77 mm | 3"  
395 ml | 14 oz

BU/P: 360  
BU/L: 60

**H 105441** BU/MP: 3  
SET/2



**LONGDRINK  
BERRY**  
(617/91)  
‡ 151 mm | 6"  
Ø 77 mm | 3"  
395 ml | 14 oz

BU/P: 360  
BU/L: 60

**H 105442** BU/MP: 3  
SET/2



**LONGDRINK  
SMOKE**  
(617/91)  
‡ 151 mm | 6"  
Ø 77 mm | 3"  
395 ml | 14 oz

BU/P: 360  
BU/L: 60

**H 105443** BU/MP: 3  
SET/2



**LONGDRINK  
TOBACCO**  
(617/91)  
‡ 151 mm | 6"  
Ø 77 mm | 3"  
395 ml | 14 oz

BU/P: 360  
BU/L: 60

**H 105444** BU/MP: 3  
SET/2

# NOBLESSE COLORS



Dishwasher safe.  
For 500 plus cycles.



COCKTAIL/WINE  
GLASS AQUA

(617/0)

↓ 188 mm | 7 2/5"

Ø 90 mm | 3 1/2"

355 ml | 12 1/2 oz

BU/P: 384

BU/L: 48

**H 105219** BU/MP: 3  
SET/2



COCKTAIL/WINE  
GLASS ROSÉ

(617/0)

↓ 188 mm | 7 2/5"

Ø 90 mm | 3 1/2"

355 ml | 12 1/2 oz

BU/P: 384

BU/L: 48

**H 105218** BU/MP: 3  
SET/2



COCKTAIL/WINE  
GLASS MINT

(617/0)

↓ 188 mm | 7 2/5"

Ø 90 mm | 3 1/2"

355 ml | 12 1/2 oz

BU/P: 384

BU/L: 48

**H 105220** BU/MP: 3  
SET/2



COCKTAIL/WINE  
GLASS TAUPE

(617/0)

↓ 188 mm | 7 2/5"

Ø 90 mm | 3 1/2"

355 ml | 12 1/2 oz

BU/P: 384

BU/L: 48

**H 105217** BU/MP: 3  
SET/2





# NOBLESSE



## LIQUEUR GOBLET

(617/5)

‡ 91 mm | 3 4/7"

Ø 50 mm | 2"

57 ml | 2 oz

BU/P: 2592

BU/L: 216

**H 103797** BU/MP: 12

PC



## GOBLET SMALL

(617/344)

‡ 126 mm | 5"

Ø 79 mm | 3 1/9"

230 ml | 8 1/9 oz

BU/P: 1056

BU/L: 96

**H 102085** BU/MP: 12

PC



## GOBLET TALL

(617/343)

‡ 141 mm | 5 1/2"

Ø 90 mm | 3 1/2"

355 ml | 12 1/2 oz

BU/P: 1056

BU/L: 96

**H 102084** BU/MP: 12

PC



## ICED BEVERAGE

(617/40)

‡ 173 mm | 6 4/5"

Ø 84 mm | 3 1/3"

400 ml | 14 1/9 oz

BU/P: 864

BU/L: 96

**H 102562** BU/MP: 12

PC



## SOFTDRINK GLASS

(617/347)

‡ 147 mm | 5 4/5"

Ø 75 mm | 3"

350 ml | 12 1/3 oz

BU/P: 1080

BU/L: 120

**H 105188** BU/MP: 12

PC



## BEER MUG

(617/92)

‡ 139 mm | 5 1/2"

Ø 145 mm | 5 5/7"

600 ml | 21 1/6 oz

BU/P: 324

BU/L: 54

**H 95885** BU/MP: 6

PC



## BOWL 11 CM

(617/1/11cm)

‡ 51 mm | 2"

Ø 110 mm | 4 1/3"

310 ml | 11 oz

BU/P: 1254

BU/L: 114

**H 95911** BU/MP: 6

PC

# NOBLESSE



COCKTAIL GLASS

(617/48)

‡ 147 mm | 5 4/5"

Ø 108 mm | 4 1/4"

180 ml | 6 1/3 oz

BU/P: 360

BU/L: 60

**H 101105** BU/MP: 12  
PC



COCKTAIL/WINE

(617/0)

‡ 188 mm | 7 2/5"

Ø 90 mm | 3 1/2"

355 ml | 12 1/2 oz

BU/P: 576

BU/L: 72

**H 104303** BU/MP: 12  
PC



CHAMPAGNE GLASS

(617/9)

‡ 204 mm | 8"

Ø 69 mm | 2 5/7"

151 ml | 5 1/3 oz

BU/P: 840

BU/L: 120

**H 104302** BU/MP: 12  
PC



PITCHER

(617/77)

‡ 232 mm | 9 1/7"

Ø 126 mm | 5"

1160 ml | 41 oz

BU/P: 280

BU/L: 40

**H 101969** BU/MP: 4  
PC



ICE BUCKET

(617/176)

‡ 225 mm | 8 6/7"

Ø 180 mm | 7"

2690 ml | 94 8/9 oz

BU/P: 144

BU/L: 36

**H 102385** BU/MP: 4  
PC

DISCONTINUED 2026\*



# NOBLESSE



## WHISKY SET 3PCS

(7381/3tlg.)

1) 1x Decanter

‡ 205 mm | 8"

Ø 99 mm | 3 8/9"

750 ml | 26 1/2 oz

BU/P: 96

BU/L: 24

2) 2x Tumbler

‡ 102 mm | 4"

Ø 82 mm | 3 2/9"

295 ml | 10 2/5 oz

**H 91899** BU/MP: 4

SET/3



# NOBLESSE HOT BEVERAGE



Quality  
Resistant to  
Thermal Shock  
[www.tuv.com](http://www.tuv.com)  
ID 1111234365

Suitable for the preparation of  
Hot drinks with boiling water.



COFFEE MUG/  
HOT BEVERGAE MUG

(617/28)

‡ 116 mm | 4 4/7"

Ø 119 mm | 4 2/3"

347 ml | 12 1/4 oz

BU/P: 792

BU/L: 72

**H 103807** BU/MP: 12

PC



HOT BEVERAGE GLASS

(617/184)

‡ 111 mm | 4 3/8"

Ø 101 mm | 4"

256 ml | 9 oz

BU/P: 1056

BU/L: 96

**H 103808** BU/MP: 12

PC





# NOBLESSE



**NEW**

VASE/HURRICANE  
LAMP 23 CM

(617/97/23cm)

‡ 231 mm | 9"

Ø 120 mm | 4 5/7"

BU/P: 240

BU/L: 40

**H 106017** BU/MP: 2  
PC



**NEW**

VASE/HURRICANE  
LAMP 28 CM

(617/97/28cm)

‡ 281 mm | 11"

Ø 146 mm | 5 3/4"

BU/P: 72

BU/L: 24

**H 106383** BU/MP: 2  
PC



# PALAIS



DISCONTINUED 2026\*

## RED WINE GOBLET

(520/1)

‡ 200 mm | 7 7/8"

Ø 91 mm | 3 4/7"

230 ml | 8 1/9 oz

BU/P: 384

BU/L: 96

**H 92951** BU/MP: 24

PC 1/6



DISCONTINUED 2026\*

## LARGE WHITE WINE

(520/2)

‡ 187 mm | 7 1/3"

Ø 85 mm | 3 1/3"

180 ml | 6 1/3 oz

BU/P: 384

BU/L: 192

**H 92952** BU/MP: 24

PC 1/6



DISCONTINUED 2026\*

## TAPER CHAMPAGNE

(520/7)

‡ 205 mm | 8"

Ø 66 mm | 2 3/5"

140 ml | 5 oz

BU/P: 624

BU/L: 312

**H 92953** BU/MP: 24

PC 1/6



DISCONTINUED 2026\*

## COCKTAIL

(520/8)

‡ 151 mm | 6"

Ø 112 mm | 4 2/5"

200 ml | 7 oz

BU/P: 288

BU/L: 96

**H 103323** BU/MP: 24

PC 1/6



## FRUIT JUICE TUMBLER

(520/14)

‡ 115 mm | 4 1/2"

Ø 69 mm | 2 5/7"

265 ml | 9 1/3 oz

BU/P: 720

BU/L: 240

**H 92954** BU/MP: 24

PC 1/6



## WHISKY TUMBLER

(520/348)

‡ 100 mm | 4"

Ø 82 mm | 3 2/9"

304 ml | 10 5/7 oz

BU/P: 768

BU/L: 192

**H 105401** BU/MP: 24

PC 1/6

# PUNK

The Punk series was developed in 2017 as part of the NACHTMANN NEXTGEN Project. Punk designer Anke Buchmann came from Central Saint Martins in London. The series uses literal translations of key punk visuals, such as studs and spikes, to design a tactile range of barware products. Breaking away from classic design rules, PUNK stands out from the crowd. Its distinctive and attention-seeking nature breaks out of traditional to add impact to every table.



## WHISKY TUMBLER

(284/71)

‡ 102 mm | 4"  
Ø 90 mm | 3 1/2"  
330 ml | 11 2/3 oz

BU/P: 672  
BU/L: 96

**H 99576** BU/MP: 12  
PC



## LONGDRINK

(284/91)

‡ 151 mm | 6"  
Ø 75 mm | 3"  
375 ml | 13 2/9 oz

BU/P: 432  
BU/L: 108

**H 99578** BU/MP: 12  
PC



## DECANTER

(284/70/0,75l)

‡ 217 mm | 8 1/2"  
Ø 137 mm | 5 2/5"  
750 ml | 26 1/2 oz

BU/P: 96  
BU/L: 32

**H 99505** BU/MP: 12  
PC



## WHISKY (7501/3tlg)

1) 1x Decanter 0,75L

‡ 217 mm | 8 1/2"  
Ø 137 mm | 5 2/5"  
750 ml | 26 1/2 oz

BU/P: 144  
BU/L: 24

**H 99501** BU/MP: 4  
SET/3

2) 2x Whisky Tumbler

‡ 102 mm | 4"  
Ø 90 mm | 3 1/2"  
330 ml | 11 2/3 oz



TUMBLER GUN METAL

(284/71)

‡ 102 mm | 4"

Ø 90 mm | 3 1/2"

330 ml | 11 2/3 oz

BU/P: 672

BU/L: 96

**H 100053** BU/MP: 4

PC



TUMBLER COPPER

(284/71)

‡ 102 mm | 4"

Ø 90 mm | 3 1/2"

330 ml | 11 2/3 oz

BU/P: 672

BU/L: 96

**H 100054** BU/MP: 4

PC



TUMBLER RUBY

(284/71)

‡ 102 mm | 4"

Ø 90 mm | 3 1/2"

330 ml | 11 2/3 oz

BU/P: 672

BU/L: 96

**H 100056** BU/MP: 4

PC



TUMBLER JET-BLACK

(284/71)

‡ 102 mm | 4"

Ø 90 mm | 3 1/2"

330 ml | 11 2/3 oz

BU/P: 672

BU/L: 96

**H 100055** BU/MP: 4

PC

BU/P: BILL UNITS/PALLET | BU/L: BILL UNITS/LAYER







VASE OVAL 16 CM

(255/152/16cm)

‡ 160 mm | 6 2/7"

Ø 112 mm | 4 2/5"

BU/P: 360

BU/L: 72

**H 88333** BU/MP: 2

PC



VASE 26 CM

(255/108/26cm)

‡ 263 mm | 10 1/3"

Ø 124 mm | 4 7/8"

BU/P: 120

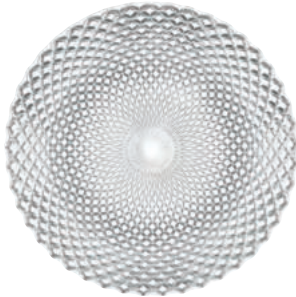
BU/L: 40

**H 88332** BU/MP: 2

PC

# RUMBA

The Cuban Rumba is a declaration of passion distilled into dance. Slow and sensuous, yearning and seductive, the couple that dances the Rumba becomes one as the rest of the world falls away.



## CHARGER PLATE

32 CM

(4050/32cm)

↑ 18 mm | 5/7"

Ø 320 mm | 12 3/5"

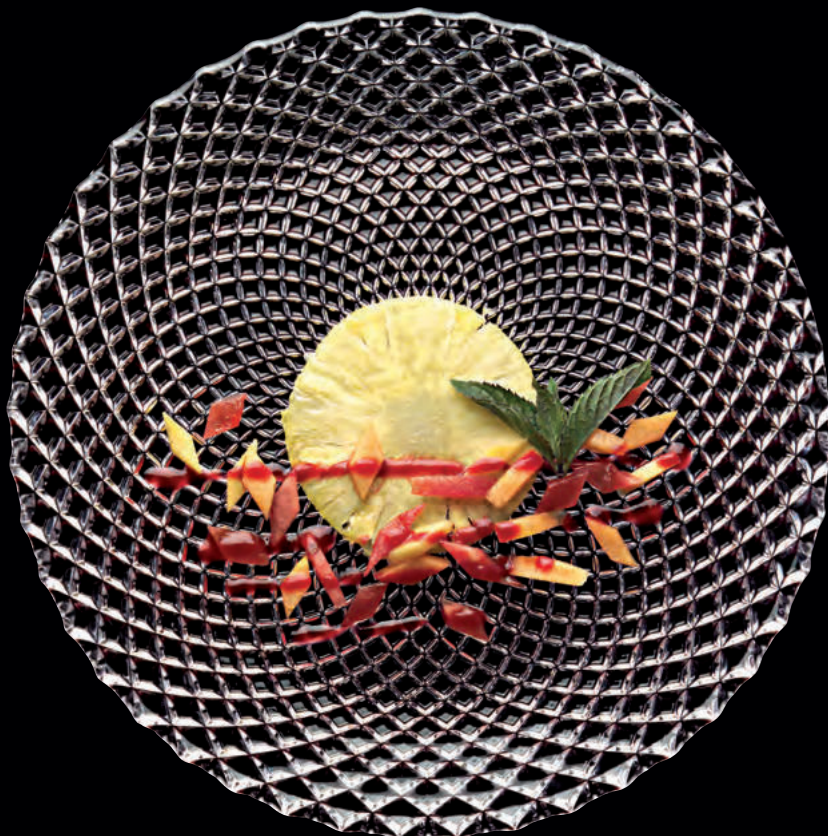
BU/P: 132

BU/L: 44

**H 89995** BU/MP: 4

SET/2

BU/P: BILL UNITS/PALLET | BU/L: BILL UNITS/LAYER



# SAMBA

The nights are long, the rhythms hot and the sounds of the Samba drums irresistible.

The excitement of Rio's Carnival - people dancing in the city streets beneath the shadow of Sugar Loaf Mountain, utterly transported by the Brazilian music and energy, hips swaying to the „samba de roda.



## CHARGER PLATE

32 CM

(4058/32cm)

‡ 18 mm | 5/7"

Ø 320 mm | 12 3/5"

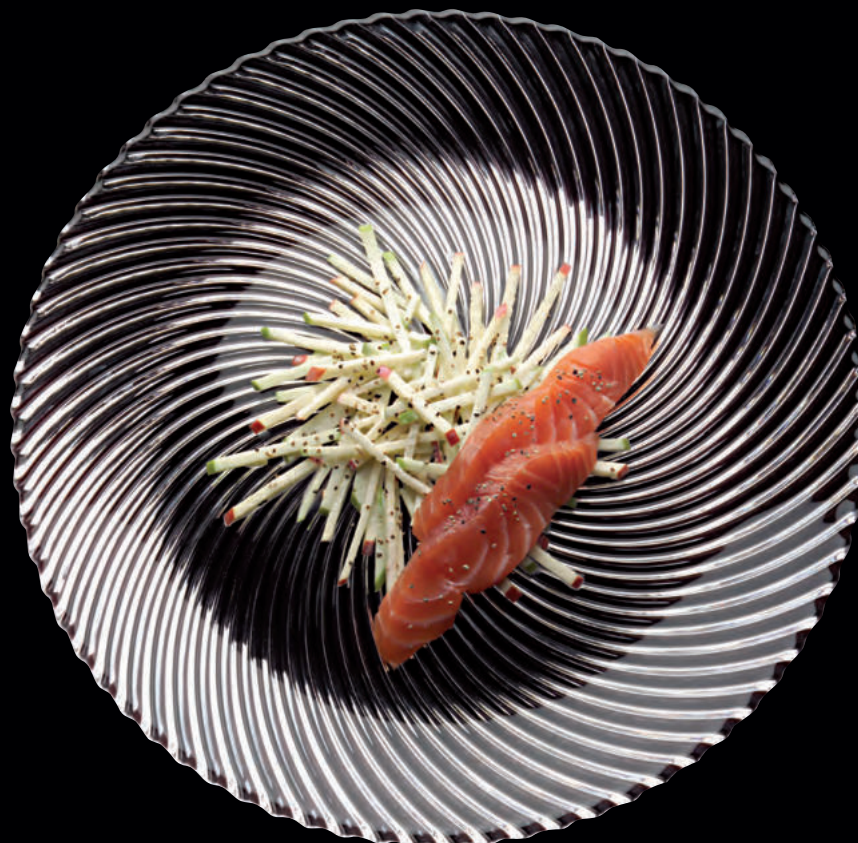
BU/P: 132

BU/L: 44

**H 89993** BU/MP: 4

SET/2

BU/P: BILL UNITS/PALLET | BU/L: BILL UNITS/LAYER





# SAPHIR

The timeless design of the Saphir series impresses with their simple elegance and sophisticated lines. They enrich everyday with their symmetry and are ideal for staging single flowers as well as floral arrangements.



VASE 27 CM

(80/59/27cm)  
‡ 270 mm | 10 5/8"  
Ø 180 mm | 7"

BU/P: 60  
BU/L: 15

**H 80502** BU/MP: 1  
PC



VASE 30 CM

(80/59/30cm)  
‡ 300 mm | 11 4/5"  
Ø 201 mm | 8"

BU/P: 45  
BU/L: 15

**H 80498** BU/MP: 1  
PC



## WHISKY TUMBLER

(258/71)

↑ 101 mm | 4"

Ø 86 mm | 3 2/5"

340 ml | 12 oz

BU/P: 672

BU/L: 96

**H 96154** BU/MP: 12

PC



## WHISKY (7367/3tlg)

1) 1x Decanter 0,75L

↑ 171 mm | 6 3/4"

Ø 130 mm | 5 1/8"

750 ml | 26 1/2 oz

2) 2x Whisky Tumbler

↑ 101 mm | 4"

Ø 86 mm | 3 2/5"

340 ml | 12 oz

BU/P: 150

BU/L: 30

**H 101984** BU/MP: 2

SET/3



## VASE 33 CM

(258/17/33cm)

↑ 331 mm | 13"

Ø 154 mm | 6"

BU/P: 72

BU/L: 24

**H 101982** BU/MP: 2

PC





The Shu Fa series was developed in 2016 as part of the NACHTMANN NEXTGEN Project. Shu Fa designers Mao Churong and Gong Yining came from the Central Academy of Fine Arts in Beijing.

The series is inspired by traditional Chinese calligraphic ink paintings. It plays with structure and texture to create a dramatic design for your dining table.



#### WHISKY TUMBLER

(639/71)

‡ 101 mm | 4"

Ø 87 mm | 3 3/7"

330 ml | 11 2/3 oz

BU/P: 672

BU/L: 96

**H 98151** BU/MP: 12  
PC



#### LONGDRINK

(639/91)

‡ 152 mm | 6"

Ø 71 mm | 2 4/5"

360 ml | 12 2/3 oz

BU/P: 432

BU/L: 108

**H 98152** BU/MP: 12  
PC

# SQUARE

The Square series features a pure and modern geometric design. Clean and classically designed, the minimalist look of Square suits every setting, and the cut decoration enhances the brilliance of the clear crystal glass



## WHISKY

(636/71)

‡ 102 mm | 4"

Ø 82 mm | 3 2/9"

345 ml | 12 1/6 oz

BU/P: 672

BU/L: 96

**H 96091** BU/MP: 12

PC



## LONGDRINK

(636/91)

‡ 151 mm | 6"

Ø 77 mm | 3"

445 ml | 15 2/3 oz

BU/P: 432

BU/L: 108

**H 98234** BU/MP: 12

PC



## VASE / HURRICANE

LAMP 23 CM

(282/97/23cm)

‡ 231 mm | 9"

Ø 120 mm | 4 5/7"

BU/P: 240

BU/L: 40

**H 97781** BU/MP: 2

PC



## VASE / HURRICANE

LAMP 28 CM

(282/97/28cm)

‡ 281 mm | 11"

Ø 146 mm | 5 3/4"

BU/P: 72

BU/L: 24

**H 97782** BU/MP: 2

PC





# SUPREME



**BURGUNDY XL**  
(7860/50)  
‡ 265 mm | 10 3/7"  
Ø 112 mm | 4 2/5"  
840 ml | 29 5/8 oz

BU/P: 84  
BU/L: 28

**H 92083** BU/MP: 4  
SET/4



**BORDEAUX GLASS XL**  
(7860/61)  
‡ 265 mm | 10 3/7"  
Ø 105 mm | 4 1/7"  
810 ml | 28 4/7 oz

BU/P: 84  
BU/L: 28

**H 92082** BU/MP: 4  
SET/4



**WHITE WINE XL**  
(7860/2)  
‡ 265 mm | 10 3/7"  
Ø 86 mm | 3 2/5"  
500 ml | 17 2/3 oz

BU/P: 144  
BU/L: 48

**H 92081** BU/MP: 4  
SET/4



**CHAMPAGNE FLUTE XL**  
(7860/38)  
‡ 265 mm | 10 3/7"  
Ø 70 mm | 2 3/4"  
300 ml | 10 4/7 oz

BU/P: 144  
BU/L: 48

**H 92084** BU/MP: 4  
SET/4

# NACHTMANN TATTOO



WINE/SPRITZ GLASS  
BOTANICAL WHITE

(467/01)

‡ 225 mm | 8 6/7"

Ø 96 mm | 3 7/9"

630 ml | 22 2/9 oz

BU/P: 252

BU/L: 36

**H 105722** BU/MP: 3  
SET/2



WINE/SPRITZ GLASS  
BOTANICAL BLACK

(467/01)

‡ 225 mm | 8 6/7"

Ø 96 mm | 3 7/9"

630 ml | 22 2/9 oz

BU/P: 252

BU/L: 36

**H 105723** BU/MP: 3  
SET/2



# TRAUBE



WINE HOCK

(3500/2)

‡ 208 mm | 8 1/5"

Ø 89 mm | 3 1/2"

230 ml | 8 1/9 oz

BU/P: 270

BU/L: 30

**H 35946** BU/MP: -  
PC



WINE HOCK  
GOLD RUBY

(3500/2)

‡ 208 mm | 8 1/5"

Ø 89 mm | 3 1/2"

230 ml | 8 1/9 oz

BU/P: 270

BU/L: 30

**H 35950** BU/MP: -  
PC



WINE HOCK  
AMETHYST

(3500/2)

‡ 208 mm | 8 1/5"

Ø 89 mm | 3 1/2"

230 ml | 8 1/9 oz

BU/P: 270

BU/L: 30

**H 35947** BU/MP: -  
PC



WINE HOCK  
AMBER

(3500/2)

‡ 208 mm | 8 1/5"

Ø 89 mm | 3 1/2"

230 ml | 8 1/9 oz

BU/P: 270

BU/L: 30

**H 35949** BU/MP: -  
PC



WINE HOCK  
AQUAMARINE

(3500/2)

‡ 208 mm | 8 1/5"

Ø 89 mm | 3 1/2"

230 ml | 8 1/9 oz

BU/P: 270

BU/L: 30

**H 35948** BU/MP: -  
PC



WINE HOCK  
COBALT BLUE

(3500/2)

‡ 208 mm | 8 1/5"

Ø 89 mm | 3 1/2"

230 ml | 8 1/9 oz

BU/P: 270

BU/L: 30

**H 35951** BU/MP: -  
PC



WINE HOCK  
RESEDA

(3500/2)

‡ 208 mm | 8 1/5"

Ø 89 mm | 3 1/2"

230 ml | 8 1/9 oz

BU/P: 270

BU/L: 30

**H 35953** BU/MP: -  
PC



WINE HOCK  
EMERALD GREEN

(3500/2)

‡ 208 mm | 8 1/5"

Ø 89 mm | 3 1/2"

230 ml | 8 1/9 oz

BU/P: 270

BU/L: 30

**H 35954** BU/MP: -  
PC

# TRAUBE



WHISKY TUMBLER

(3263/9)  
‡ 90 mm | 3 1/2"  
Ø 76 mm | 3"  
250 ml | 8 4/5 oz

BU/P: 768  
BU/L: 96

**H 35889** BU/MP: -  
PC



WHISKY TUMBLER  
GOLD RUBY

(3263/9)  
‡ 90 mm | 3 1/2"  
Ø 76 mm | 3"  
250 ml | 8 4/5 oz

BU/P: 768  
BU/L: 96

**H 35893** BU/MP: -  
PC



WHISKY TUMBLER  
AMETHYST

(3263/9)  
‡ 90 mm | 3 1/2"  
Ø 76 mm | 3"  
250 ml | 8 4/5 oz

BU/P: 768  
BU/L: 96

**H 35890** BU/MP: -  
PC



WHISKY TUMBLER  
AMBER

(3263/9)  
‡ 90 mm | 3 1/2"  
Ø 76 mm | 3"  
250 ml | 8 4/5 oz

BU/P: 768  
BU/L: 96

**H 35892** BU/MP: -  
PC



WHISKY TUMBLER  
AQUAMARINE

(3263/9)  
‡ 90 mm | 3 1/2"  
Ø 76 mm | 3"  
250 ml | 8 4/5 oz

BU/P: 768  
BU/L: 96

**H 35891** BU/MP: -  
PC



WHISKY TUMBLER  
COBALT BLUE

(3263/9)  
‡ 90 mm | 3 1/2"  
Ø 76 mm | 3"  
250 ml | 8 4/5 oz

BU/P: 768  
BU/L: 96

**H 35894** BU/MP: -  
PC



WHISKY TUMBLER  
RESEDA

(3263/9)  
‡ 90 mm | 3 1/2"  
Ø 76 mm | 3"  
250 ml | 8 4/5 oz

BU/P: 768  
BU/L: 96

**H 35896** BU/MP: -  
PC



WHISKY TUMBLER  
EMERALD GREEN

(3263/9)  
‡ 90 mm | 3 1/2"  
Ø 76 mm | 3"  
250 ml | 8 4/5 oz

BU/P: 768  
BU/L: 96

**H 35897** BU/MP: -  
PC

# ViNova



**RED WINE BALLON**  
(7872/0)

‡ 240 mm | 9 4/9"  
Ø 122 mm | 4 4/5"  
840 ml | 29 5/8 oz

BU/P: 84  
BU/L: 12

**H 98072** BU/MP: 3  
SET/4



**RED WINE MAGNUM**  
(7872/60)

‡ 240 mm | 9 4/9"  
Ø 105 mm | 4 4/5"  
680 ml | 24 oz

BU/P: 105  
BU/L: 15

**H 98076** BU/MP: 3  
SET/4



**RED WINE GLASS**  
(7872/1)

‡ 240 mm | 9 4/9"  
Ø 88 mm | 3 1/2"  
550 ml | 19 2/5 oz

BU/P: 168  
BU/L: 24

**H 98073** BU/MP: 3  
SET/4



**WHITE WINE GLASS**  
(7872/2)

‡ 240 mm | 9 4/9"  
Ø 80 mm | 3 1/7"  
380 ml | 13 2/5 oz

BU/P: 168  
BU/L: 24

**H 98074** BU/MP: 3  
SET/4



**CHAMPAGNE GLASS**  
(7872/38)

‡ 240 mm | 9 4/9"  
Ø 80 mm | 3 1/7"  
280 ml | 9 7/8 oz

BU/P: 168  
BU/L: 24

**H 98075** BU/MP: -  
SET/4



**TUMBLER**  
(433/10)

‡ 102 mm | 4"  
Ø 83 mm | 3 1/4"  
430 ml | 15 1/6 oz

BU/P: 336  
BU/L: 24

**H 106125** BU/MP: -  
SET/4









**CARAFE 0,75L**  
(2884/0,75)  
‡ 275 mm | 10 5/6"  
Ø 260 mm | 10 1/4"  
750 ml | 26 1/2 oz

BU/P: 48  
BU/L: 8

**H 54880** BU/MP: -  
PC



**DECANTER 0,75L**  
(2893/0,75)  
‡ 230 mm | 9"  
Ø 200 mm | 7 7/8"  
750 ml | 26 1/2 oz

BU/P: 105  
BU/L: 15

**H 59518** BU/MP: 3  
PC



**PITCHER 0,50 L**  
(3888/0,5)  
‡ 118 mm | 4 2/3"  
Ø 88 mm | 3 1/2"  
500 ml | 17 2/3 oz

BU/P: 756  
BU/L: 54

**H 47925** BU/MP: -  
PC/6



**PITCHER 1 L**  
(3888/1,0)  
‡ 149 mm | 5 6/7"  
Ø 111 mm | 4 3/8"  
1000 ml | 35 2/7 oz

BU/P: 400  
BU/L: 40

**H 47928** BU/MP: -  
PC



**PITCHER 1,5 L**  
(3888/1,5)  
‡ 169 mm | 6 2/3"  
Ø 150 mm | 6"  
1500 ml | 53 oz

BU/P: 240  
BU/L: 24

**H 47930** BU/MP: -  
PC



# BARWARE



# BARWARE

## APERITIVO



### TUMBLER

(668/188)

‡ 97 mm | 3 5/6"

Ø 86 mm | 3 2/5"

370 ml | 13 oz

BU/P: 384

BU/L: 48

**H 105578** BU/MP: 4  
SET/2



### LONGDRINK

(668/91)

‡ 149 mm | 5 6/7"

Ø 76 mm | 3"

395 ml | 14 oz

BU/P: 288

BU/L: 48

**H 105577** BU/MP: 4  
SET/2



### SPRITZ/ RED WINE GLASS

(426/39)

‡ 240 mm | 9 4/9"

Ø 99 mm | 3 8/9"

640 ml | 22 4/7 oz

BU/P: 196

BU/L: 28

**H 105600** BU/MP: 4  
SET/2



### UNIVERSAL/ WHITE WINE GLASS

(426/32)

‡ 235 mm | 9 1/4"

Ø 89 mm | 3 1/2"

490 ml | 17 2/7 oz

BU/P: 280

BU/L: 40

**H 105729** BU/MP: 4  
SET/2

# BARWARE

## BOSSA NOVA EDITION



**NEW**

### TUMBLER

(7895/41)

‡ 100 mm | 4"

Ø 78 mm | 3"

360 ml | 12 2/3 oz

BU/P: 798

BU/L: 57

**H 106164** BU/MP: 3  
SET/2



**NEW**

### COCKTAIL GLASS

(7895/08)

‡ 144 mm | 5 2/3"

Ø 108 mm | 4 1/4"

252 ml | 8 8/9 oz

BU/P: 330

BU/L: 30

**H 106162** BU/MP: 3  
SET/2



**NEW**

### WINE GLASS

(7895/02)

‡ 208 mm | 8 1/5"

Ø 80 mm | 3 1/7"

435 ml | 15 1/3 oz

BU/P: 384

BU/L: 48

**H 106688** BU/MP: 3  
SET/2

# BARWARE

## BOSSA NOVA



SOF  
(632/14)  
‡ 85 mm | 3 1/3"  
Ø 82 mm | 3 2/9"  
235 ml | 8 2/7 oz

BU/P: 864  
BU/L: 96

**H 103039** BU/MP: 12  
PC



WHISKY TUMBLER  
(632/71)  
‡ 101 mm | 4"  
Ø 86 mm | 3 2/5"  
330 ml | 11 2/3 oz

BU/P: 672  
BU/L: 96

**H 92054** BU/MP: 12  
PC



LONGDRINK  
(632/91)  
‡ 151 mm | 6"  
Ø 81 mm | 3 1/5"  
399 ml | 14 oz

BU/P: 432  
BU/L: 108

**H 92055** BU/MP: 12  
PC



PITCHER  
(632/77)  
‡ 232 mm | 9 1/7"  
Ø 126 mm | 5"  
1160 ml | 41 oz

BU/P: 280  
BU/L: 40

**H 92074** BU/MP: 4  
PC



SOF  
(632/14)  
‡ 85 mm | 3 1/3"  
Ø 82 mm | 3 2/9"  
235 ml | 8 2/7 oz

BU/P: 864  
BU/L: 96

**H 103039** BU/MP: 12  
PC



WHISKY TUMBLER  
(632/71)  
‡ 101 mm | 4"  
Ø 86 mm | 3 2/5"  
330 ml | 11 2/3 oz

BU/P: 672  
BU/L: 96

**H 92054** BU/MP: 12  
PC



LONGDRINK  
(632/91)  
‡ 151 mm | 6"  
Ø 81 mm | 3 1/5"  
399 ml | 14 oz

BU/P: 432  
BU/L: 108

**H 92055** BU/MP: 12  
PC

# BARWARE

## BOSSA NOVA



WHISKY (7590/3tlg)

1) 1x Decanter 0,75L

‡ 257 mm | 10 1/8"

Ø 91 mm | 3 4/7"

750 ml | 26 1/2 oz

2) 2x Whisky Tumbler

‡ 101 mm | 4"

Ø 86 mm | 3 2/5"

330 ml | 11 2/3 oz

BU/P: 112

BU/L: 28

**H 101095** BU/MP: 4

SET/3

BU/P: BILL UNITS/PALLET | BU/L: BILL UNITS/LAYER



# BARWARE CELEBRATION



## GIN & TONIC

(7886/0)

‡ 222 mm | 8 3/4"

Ø 105 mm | 4 1/7"

640 ml | 22 4/7 oz

BU/P: 420

BU/L: 60

**H 102946** BU/MP: 12  
PC



DISCONTINUED 2026\*

## BEER GLASS

(7886/55)

‡ 172 mm | 6 7/9"

Ø 87 mm | 3 3/7"

380 ml | 13 2/5 oz

BU/P: 960

BU/L: 96

**H 105250** BU/MP: 12  
PC

\*DISCONTINUED 2026 / AS LONG AS STOCK LASTS

BU/P: BILL UNITS/PALLET | BU/L: BILL UNITS/LAYER



# BARWARE

## NACHTMANN ETHNO



**NEW**

### WATER GLASS

(661/350)

‡ 90 mm | 3 1/2"

Ø 83 mm | 3 1/4"

235 ml | 8 2/7 oz

BU/P: 864

BEITL 96

**H 104966** BU/MP: 12

PC



### TUMBLER

(661/71)

‡ 99 mm | 3 8/9"

Ø 82 mm | 3 2/9"

304 ml | 10 5/7 oz

BU/P: 768

BU/L: 96

**H 104299** BU/MP: 12

PC



### LONGDRINK

(661/91)

‡ 151 mm | 6"

Ø 77 mm | 3"

422 ml | 14 8/9 oz

BU/P: 540

BU/L: 108

**H 105187** BU/MP: 12

PC



### CARAFE

(661/153)

‡ 270 mm | 10 5/8"

Ø 94 mm | 3 2/3"

1113 ml | 39 1/4 oz

BU/P: 216

BU/L: 72

**H 105396** BU/MP: 4

PC



### TUMBLER

(661/71)

‡ 99 mm | 3 8/9"

Ø 82 mm | 3 2/9"

304 ml | 10 5/7 oz

BU/P: 768

BU/L: 96

**H 104299** BU/MP: 12

PC



### LONGDRINK

(661/91)

‡ 151 mm | 6"

Ø 77 mm | 3"

422 ml | 14 8/9 oz

BU/P: 540

BU/L: 108

**H 105187** BU/MP: 12

PC

# BARWARE

## NACHTMANN ETHNO



**NEW**

DECANTER (7619/3tlg)

1) 1x Decanter 0,75L

‡ 260 mm | 10 1/4"

Ø 100 mm | 4"

750 ml | 26 1/2 oz

2) 2x Tumbler

‡ 99 mm | 3 8/9"

Ø 82 mm | 3 2/9"

304 ml | 10 5/7 oz

BU/P: 126

BU/L: 18

**H 106157** BU/MP: 3

SET/3

BU/P: BILL UNITS/PALLET | BU/L: BILL UNITS/LAYER



# BARWARE

## NACHTMANN ETHNO

### BLACK EDITION



Dishwasher safe.  
For 500 plus cycles.



#### WHISKY TUMBLER BLACK

(661/71)

‡ 99 mm | 3 8/9"

Ø 82 mm | 3 2/9"

304 ml | 10 5/7 oz

BU/P: 768

BU/L: 96

**H 105445** BU/MP: 12

PC

BU/P: BILL UNITS/PALLET | BU/L: BILL UNITS/LAYER



# BARWARE

## NACHTMANN ETHNO COLORS



Dishwasher safe.  
For 500 plus cycles.



### TUMBLER VINTAGE BLUE

(661/71)  
‡ 99 mm | 3 8/9"  
Ø 82 mm | 3 2/9"  
304 ml | 10 5/7 oz

BU/P: 408  
BU/L: 51

**H 105389** BU/MP: 3  
SET/2

### TUMBLER MINT

(661/71)  
‡ 99 mm | 3 8/9"  
Ø 82 mm | 3 2/9"  
304 ml | 10 5/7 oz

BU/P: 408  
BU/L: 51

**H 105388** BU/MP: 3  
SET/2

BU/P: BILL UNITS/PALLET | BU/L: BILL UNITS/LAYER



# BARWARE

## HIGHLAND



1)

2)

3)

4)

### TUMBLER

(7435/4tlg.)

‡ 102 mm | 4"

Ø 82 mm | 3 2/9"

345 ml | 12 1/6 oz

BU/P: 672

BU/L: 96

1) TUMBLER CROSS / PC

**H 96089** BU/MP: 12

2) TUMBLER STRAIGHT / PC

**H 96090** BU/MP: 12

3) TUMBLER SQUARE / PC

**H 96091** BU/MP: 12

4) TUMBLER DIAMOND / PC

**H 96092** BU/MP: 12



5)

6)

7)

8)

### LONGDRINK

(745474tlg.)

‡ 151 mm | 6"

Ø 77 mm | 3"

445 ml | 15 2/3 oz

BU/P: 432

BU/L: 108

5) LONGDRINK CROSS / PC

**H 98232** BU/MP: 12

6) LONGDRINK STRAIGHT / PC

**H 98233** BU/MP: 12

7) LONGDRINK SQUARE / PC

**H 98234** BU/MP: 12

8) LONGDRINK DIAMOND / PC

**H 98235** BU/MP: 12



DISCONTINUED 2026\*



DISCONTINUED 2026\*



### TUMBLER RESEDA

(637/71)

‡ 102 mm | 4"

Ø 82 mm | 3 2/9"

345 ml | 12 1/6 oz

BU/P: 672

BU/L: 96

**H 97444** BU/MP: 4

PC

### TUMBLER AQUA

(635/71)

‡ 102 mm | 4"

Ø 82 mm | 3 2/9"

345 ml | 12 1/6 oz

BU/P: 672

BU/L: 96

**H 97442** BU/MP: 4

PC

### TUMBLER SMOKE

(636/71)

‡ 102 mm | 4"

Ø 82 mm | 3 2/9"

345 ml | 12 1/6 oz

BU/P: 672

BU/L: 96

**H 97439** BU/MP: 12

PC

# BARWARE HIGHLAND



DECANTER 0,75L  
(632/91)  
‡ 244 mm | 9 3/5"  
Ø 99 mm | 3 8/9"  
750 ml | 26 1/2 oz

BU/P: 180  
BU/L: 60

**H 96826** BU/MP: 4  
PC

WHISKY (7473/5tlg)  
1) 1x Decanter 0,75L  
‡ 244 mm | 9 3/5"  
Ø 99 mm | 3 8/9"  
750 ml | 26 1/2 oz

BU/P: 72  
BU/L: 24

**H 98196** BU/MP: 4  
SET/5

2) 2x Whisky Tumbler  
‡ 102 mm | 4"  
Ø 82 mm | 3 2/9"  
345 ml | 12 1/6 oz

BU/P: BILL UNITS/PALLET | BU/L: BILL UNITS/LAYER







### TUMBLER

(651/71)

‡ 97 mm | 3 5/6"

Ø 78 mm | 3"

305 ml | 10 3/4 oz

BU/P: 768

BU/L: 96

**H 102082** BU/MP: 12

PC



### LONGDRINK

(651/91)

‡ 148 mm | 5 5/6"

Ø 73 mm | 2 7/8"

375 ml | 13 2/9 oz

BU/P: 972

BU/L: 108

**H 102081** BU/MP: 12

PC

# BARWARE

## NOBLESSE



**SHOT GLASS**  
(617/43)  
‡ 61 mm | 2 2/5"  
Ø 50 mm | 2"  
55 ml | 2 oz

BU/P: 1920  
BU/L: 192

**H 100695** BU/MP: 12  
PC



**SOF**  
(617/14)  
‡ 84 mm | 3 1/3"  
Ø 80 mm | 3 1/7"  
240 ml | 8 1/2 oz

BU/P: 768  
BU/L: 96

**H 98856** BU/MP: 12  
PC



**WHISKY TUMBLER**  
(617/71)  
‡ 102 mm | 4"  
Ø 82 mm | 3 2/9"  
295 ml | 10 2/5 oz

BU/P: 768  
BU/L: 96

**H 91710** BU/MP: 12  
PC



**LONGDRINK**  
(617/91)  
‡ 151 mm | 6"  
Ø 77 mm | 3"  
395 ml | 14 oz

BU/P: 432  
BU/L: 108

**H 91703** BU/MP: 12  
PC



**NEW**

**WATER GLASS**  
(617/350)  
‡ 90 mm | 3 1/2"  
Ø 83 mm | 3 1/4"  
235 ml | 8 2/7 oz

BU/P: 864  
BU/L: 96

**H 104967** BU/MP: 12  
PC



**SOF**  
(617/14)  
‡ 84 mm | 3 1/3"  
Ø 80 mm | 3 1/7"  
240 ml | 8 1/2 oz

BU/P: 768  
BU/L: 96

**H 98856** BU/MP: 12  
PC



**WHISKY TUMBLER**  
(617/71)  
‡ 102 mm | 4"  
Ø 82 mm | 3 2/9"  
295 ml | 10 2/5 oz

BU/P: 768  
BU/L: 96

**H 91710** BU/MP: 12  
PC



**LONGDRINK**  
(617/91)  
‡ 151 mm | 6"  
Ø 77 mm | 3"  
395 ml | 14 oz

BU/P: 432  
BU/L: 108

**H 91703** BU/MP: 12  
PC



# BARWARE

## NACHTMANN NOBLESSE BLACK EDITION



Dishwasher safe.  
For 500 plus cycles.



WHISKY TUMBLER  
BLACK  
(617/71)

↑ 102 mm | 4"  
Ø 82 mm | 3 2/9"  
295 ml | 10 2/5 oz

BU/P: 768

BU/L: 96

**H 105446** BU/MP: 12

PC



# BARWARE

## JOHN WICK



DISCONTINUED 2026\*

### WHISKY TUMBLER

(617/71)

‡ 102 mm | 4"

Ø 82 mm | 3 2/9"

295 ml | 10 2/5 oz

RETAIL ONLY



# JOHN WICK®



# BARWARE

## NOBLESSE COLORS



Dishwasher safe.  
For 500 plus cycles.



WHISKY TUMBLER  
AQUA  
(617/71)  
‡ 102 mm | 4"  
Ø 82 mm | 3 2/9"  
295 ml | 10 2/5 oz

BU/P: 408  
BU/L: 51

**H 104239** BU/MP: 3  
SET/2



DISCONTINUED 2026\*

WHISKY TUMBLER  
ROSÉ  
(617/71)  
‡ 102 mm | 4"  
Ø 82 mm | 3 2/9"  
295 ml | 10 2/5 oz

BU/P: 408  
BU/L: 51

**H 104240** BU/MP: 3  
SET/2



WHISKY TUMBLER  
MINT  
(617/71)  
‡ 102 mm | 4"  
Ø 82 mm | 3 2/9"  
295 ml | 10 2/5 oz

BU/P: 408  
BU/L: 51

**H 104241** BU/MP: 3  
SET/2



WHISKY TUMBLER  
TAUPE  
(617/71)  
‡ 102 mm | 4"  
Ø 82 mm | 3 2/9"  
295 ml | 10 2/5 oz

BU/P: 408  
BU/L: 51

**H 104242** BU/MP: 3  
SET/2



WHISKY TUMBLER  
VINTAGE BLUE  
(617/71)  
‡ 102 mm | 4"  
Ø 82 mm | 3 2/9"  
295 ml | 10 2/5 oz

BU/P: 408  
BU/L: 51

**H 104243** BU/MP: 3  
SET/2



WHISKY TUMBLER  
BERRY  
(617/71)  
‡ 102 mm | 4"  
Ø 82 mm | 3 2/9"  
295 ml | 10 2/5 oz

BU/P: 408  
BU/L: 51

**H 104244** BU/MP: 3  
SET/2



WHISKY TUMBLER  
SMOKE  
(617/71)  
‡ 102 mm | 4"  
Ø 82 mm | 3 2/9"  
295 ml | 10 2/5 oz

BU/P: 408  
BU/L: 51

**H 104245** BU/MP: 3  
SET/2



WHISKY TUMBLER  
TOBACCO  
(617/71)  
‡ 102 mm | 4"  
Ø 82 mm | 3 2/9"  
295 ml | 10 2/5 oz

BU/P: 408  
BU/L: 51

**H 104246** BU/MP: 3  
SET/2

\*DISCONTINUED 2026 / AS LONG AS STOCK LASTS

BU/P: BILL UNITS/PALLET | BU/L: BILL UNITS/LAYER

# BARWARE

## NOBLESSE COLORS



Dishwasher safe.  
For 500 plus cycles.



**LONGDRINK  
AQUA**  
(617/91)  
‡ 151 mm | 6"  
Ø 77 mm | 3"  
395 ml | 14 oz

BU/P: 360  
BU/L: 60

**H 105710** BU/MP: 3  
SET/2



DISCONTINUED 2026\*

**LONGDRINK  
ROSÉ**  
(617/91)  
‡ 151 mm | 6"  
Ø 77 mm | 3"  
395 ml | 14 oz

BU/P: 360  
BU/L: 60

**H 105711** BU/MP: 3  
SET/2



**LONGDRINK  
MINT**  
(617/91)  
‡ 151 mm | 6"  
Ø 77 mm | 3"  
395 ml | 14 oz

BU/P: 360  
BU/L: 60

**H 105712** BU/MP: 3  
SET/2



**LONGDRINK  
TAUPE**  
(617/91)  
‡ 151 mm | 6"  
Ø 77 mm | 3"  
395 ml | 14 oz

BU/P: 360  
BU/L: 60

**H 105713** BU/MP: 3  
SET/2



**LONGDRINK  
VINTAGE BLUE**  
(617/91)  
‡ 151 mm | 6"  
Ø 77 mm | 3"  
395 ml | 14 oz

BU/P: 360  
BU/L: 60

**H 105441** BU/MP: 3  
SET/2



**LONGDRINK  
BERRY**  
(617/91)  
‡ 151 mm | 6"  
Ø 77 mm | 3"  
395 ml | 14 oz

BU/P: 360  
BU/L: 60

**H 105442** BU/MP: 3  
SET/2



**LONGDRINK  
SMOKE**  
(617/91)  
‡ 151 mm | 6"  
Ø 77 mm | 3"  
395 ml | 14 oz

BU/P: 360  
BU/L: 60

**H 105443** BU/MP: 3  
SET/2



**LONGDRINK  
TOBACCO**  
(617/91)  
‡ 151 mm | 6"  
Ø 77 mm | 3"  
395 ml | 14 oz

BU/P: 360  
BU/L: 60

**H 105444** BU/MP: 3  
SET/2

# BARWARE

## NOBLESSE COLORS



Dishwasher safe.  
For 500 plus cycles.



### COCKTAIL/WINE GLASS AQUA

(617/0)

↓ 188 mm | 7 2/5"

Ø 90 mm | 3 1/2"

355 ml | 12 1/2 oz

BU/P: 384

BU/L: 48

**H 105219** BU/MP: 3  
SET/2

### COCKTAIL/WINE GLASS ROSÉ

(617/0)

↓ 188 mm | 7 2/5"

Ø 90 mm | 3 1/2"

355 ml | 12 1/2 oz

BU/P: 384

BU/L: 48

**H 105218** BU/MP: 3  
SET/2

### COCKTAIL/WINE GLASS MINT

(617/0)

↓ 188 mm | 7 2/5"

Ø 90 mm | 3 1/2"

355 ml | 12 1/2 oz

BU/P: 384

BU/L: 48

**H 105220** BU/MP: 3  
SET/2

### COCKTAIL/WINE GLASS TAUPE

(617/0)

↓ 188 mm | 7 2/5"

Ø 90 mm | 3 1/2"

355 ml | 12 1/2 oz

BU/P: 384

BU/L: 48

**H 105217** BU/MP: 3  
SET/2

# BARWARE

## NOBLESSE



### LIQUEUR GOBLET

(617/5)

‡ 91 mm | 3 4/7"

Ø 50 mm | 2"

57 ml | 2 oz

BU/P: 2592

BU/L: 216

**H 103797** BU/MP: 12  
PC



### GOBLET SMALL

(617/344)

‡ 126 mm | 5"

Ø 79 mm | 3 1/9"

230 ml | 8 1/9 oz

BU/P: 1056

BU/L: 96

**H 102085** BU/MP: 12  
PC



### GOBLET TALL

(617/343)

‡ 141 mm | 5 1/2"

Ø 90 mm | 3 1/2"

355 ml | 12 1/2 oz

BU/P: 1056

BU/L: 96

**H 102084** BU/MP: 12  
PC



### ICED BEVERAGE

(617/40)

‡ 173 mm | 6 4/5"

Ø 84 mm | 3 1/3"

400 ml | 14 1/9 oz

BU/P: 864

BU/L: 96

**H 102562** BU/MP: 12  
PC



### SOFTDRINK GLASS

(617/347)

‡ 147 mm | 5 4/5"

Ø 75 mm | 3"

350 ml | 12 1/3 oz

BU/P: 1080

BU/L: 120

**H 105188** BU/MP: 12  
PC



### BEER MUG

(617/92)

‡ 139 mm | 5 1/2"

Ø 145 mm | 5 5/7"

600 ml | 21 1/6 oz

BU/P: 324

BU/L: 54

**H 95885** BU/MP: 6  
PC



### BOWL 11CM

(617/1/11cm)

‡ 51 mm | 2"

Ø 110 mm | 4 1/3"

310 ml | 11 oz

BU/P: 1254

BU/L: 114

**H 95911** BU/MP: 6  
PC

# BARWARE

## NOBLESSE



COCKTAIL GLASS

(617/48)

‡ 147 mm | 5 4/5"

Ø 108 mm | 4 1/4"

180 ml | 6 1/3 oz

BU/P: 360

BU/L: 60

**H 101105** BU/MP: 12  
PC



COCKTAIL/WINE

(617/0)

‡ 188 mm | 7 2/5"

Ø 90 mm | 3 1/2"

355 ml | 12 1/2 oz

BU/P: 576

BU/L: 72

**H 104303** BU/MP: 12  
PC



CHAMPAGNE GLASS

(617/9)

‡ 204 mm | 8"

Ø 69 mm | 2 5/7"

151 ml | 5 1/3 oz

BU/P: 840

BU/L: 120

**H 104302** BU/MP: 12  
PC

BU/P: BILL UNITS/PALLET | BU/L: BILL UNITS/LAYER



# BARWARE

## NOBLESSE



DISCONTINUED 2026\*

### PITCHER

(617/77)  
 † 232 mm | 9 1/7"  
 Ø 126 mm | 5"  
 1160 ml | 41 oz

BU/P: 280  
 BU/L: 40

**H 101969** BU/MP: 4  
 PC

### ICE BUCKET

(617/176)  
 † 225 mm | 8 6/7"  
 Ø 180 mm | 7"  
 2690 ml | 94 8/9 oz

BU/P: 144  
 BU/L: 36

**H 102385** BU/MP: 4  
 PC



### WHISKY SET

(7381/3tlg.)

1) 1x Decanter

† 205 mm | 8"  
 Ø 99 mm | 3 8/9"  
 750 ml | 26 1/5 oz

BU/P: 96  
 BU/L: 24

**H 91899** BU/MP: 4  
 SET/3

2) 2x Whisky Tumbler

† 102 mm | 4"  
 Ø 82 mm | 3 2/9"  
 295 ml | 10 2/5 oz



# BARWARE

## PALAIS



### FRUIT JUICE TUMBLER

(520/14)

‡ 115 mm | 4 1/2"

Ø 69 mm | 2 5/7"

265 ml | 9 1/3 oz

BU/P: 720

BU/L: 240

**H 92954** BU/MP: 24

PC 1/6



### WHISKY TUMBLER

(520/348)

‡ 100 mm | 4"

Ø 82 mm | 3 2/9"

304 ml | 10 5/7 oz

BU/P: 768

BU/L: 192

**H 105401** BU/MP: 24

PC 1/6

# BARWARE

## PUNK

NEXT  
GEN Design for  
Nachtmann



### WHISKY TUMBLER

(284/71)

‡ 102 mm | 4"  
Ø 90 mm | 3 1/2"  
330 ml | 11 2/3 oz

BU/P: 672  
BU/L: 96

**H 99576** BU/MP: 12  
PC



### LONGDRINK

(284/91)

‡ 151 mm | 6"  
Ø 75 mm | 3"  
375 ml | 13 2/9 oz

BU/P: 432  
BU/L: 108

**H 99578** BU/MP: 12  
PC



### DECANTER

(284/70/0,75l)

‡ 217 mm | 8 1/2"  
Ø 137 mm | 5 2/5"  
750 ml | 26 1/2 oz

BU/P: 96  
BU/L: 32

**H 99505** BU/MP: 12  
PC



### WHISKY (7501/3tlg)

1) 1x Decanter 0,75L

‡ 217 mm | 8 1/2"  
Ø 137 mm | 5 2/5"  
750 ml | 26 1/2 oz

BU/P: 144  
BU/L: 24

**H 99501** BU/MP: 4  
SET/3



2) 2x Whisky Tumbler

‡ 102 mm | 4"  
Ø 90 mm | 3 1/2"  
330 ml | 11 2/3 oz



TUMBLER GUN METAL

(284/71)

‡ 102 mm | 4"

Ø 90 mm | 3 1/2"

330 ml | 11 2/3 oz

BU/P: 672

BU/L: 96

**H 100053** BU/MP: 12

PC



TUMBLER COPPER

(284/71)

‡ 102 mm | 4"

Ø 90 mm | 3 1/2"

330 ml | 11 2/3 oz

BU/P: 672

BU/L: 96

**H 100054** BU/MP: 12

PC



TUMBLER RUBY

(284/71)

‡ 102 mm | 4"

Ø 90 mm | 3 1/2"

330 ml | 11 2/3 oz

BU/P: 672

BU/L: 96

**H 100056** BU/MP: 12

PC



TUMBLER JET-BLACK

(284/71)

‡ 102 mm | 4"

Ø 90 mm | 3 1/2"

330 ml | 11 2/3 oz

BU/P: 672

BU/L: 96

**H 100055** BU/MP: 4

PC

BU/P: BILL UNITS/PALLET | BU/L: BILL UNITS/LAYER



# BARWARE

## SCULPTURE

NEXT  
GEN Design for  
Nachtmann



### WHISKY TUMBLER

(258/71)

↑ 101 mm | 4"

Ø 86 mm | 3 2/5"

340 ml | 12 oz

BU/P: 672

BU/L: 96

**H 96154** BU/MP: 12

PC

### WHISKY (7367/3tlg)

1) 1x Decanter 0,75L

↑ 171 mm | 6 3/4"

Ø 130 mm | 5 1/8"

750 ml | 26 1/2 oz

BU/P: 150

BU/L: 30

**H 101984** BU/MP: 2

SET/3

2) 2x Whisky Tumbler

↑ 101 mm | 4"

Ø 86 mm | 3 2/5"

340 ml | 12 oz

BU/P: BILL UNITS/PALLET | BU/L: BILL UNITS/LAYER





WHISKY TUMBLER

(639/71)

‡ 101 mm | 4"

Ø 87 mm | 3 3/7"

330 ml | 11 2/3 oz

BU/P: 672

BU/L: 96

**H 98151** BU/MP: 12

PC



LONGDRINK

(639/91)

‡ 152 mm | 6"

Ø 71 mm | 2 4/5"

360 ml | 12 2/3 oz

BU/P: 432

BU/L: 108

**H 98152** BU/MP: 12

PC

BU/P: BILL UNITS/PALLET | BU/L: BILL UNITS/LAYER



# BARWARE

## SQUARE



### WHISKY

(636/71)

‡ 102 mm | 4"

Ø 82 mm | 3 2/9"

345 ml | 12 1/6 oz

BU/P: 672

BU/L: 96

**H 96091** BU/MP: 12

PC



### LONGDRINK

(636/91)

‡ 151 mm | 6"

Ø 77 mm | 3"

445 ml | 15 2/3 oz

BU/P: 432

BU/L: 108

**H 98234** BU/MP: 12

PC





# VASES



# VASES

## BOSSA NOVA



VASE 16 CM  
(4130/16 cm)  
↓ 157 mm | 6 1/6"  
Ø 62 mm | 2 4/9"

BU/P: 700  
BU/L: 140

**H 82087** BU/MP: 4  
PC



VASE 20 CM  
(4130/20 cm)  
↓ 200 mm | 7 7/8"  
Ø 96 mm | 3 7/9"

BU/P: 288  
BU/L: 48

**H 82088** BU/MP: 4  
PC



VASE 28 CM  
(4055/28 cm)  
↓ 280 mm | 11"  
Ø 110 mm | 4 1/3"

BU/P: 150  
BU/L: 50

**H 80727** BU/MP: 2  
PC



VASE 28 CM  
(4056/28 cm)  
↓ 280 mm | 11"  
Ø 143 mm | 5 5/8"

BU/P: 112  
BU/L: 28

**H 80729** BU/MP: 2  
PC

# VASES

## NACHTMANN ETHNO



NEW

VASE 23 CM

(661/97/23cm)

‡ 231 mm | 9"

Ø 120 mm | 4 5/7"

BU/P: 240

BU/L: 40

H 106018 BU/MP: 2

PC



NEW

VASE 28 CM

(661/97/28cm)

‡ 281 mm | 11"

Ø 146 mm | 5 3/4"

BU/P: 72

BU/L: 24

H 106381 BU/MP: 2

PC



# VASES

## MINERVA



FOOTED VASE  
32 CM (651/81/32cm)  
‡ 313 mm | 12 1/3"  
Ø 180 mm | 7"

BU/P: 48  
BU/L: 12

**H 103634** BU/MP: 1  
PC



FOOTED VASE  
40 CM (651/81/40cm)  
‡ 403 mm | 15 6/7"  
Ø 160 mm | 6 2/7"

BU/P: 48  
BU/L: 24

**H 103635** BU/MP: 1  
PC



FOOTED VASE  
IN GOLD 32 CM  
(651/81/32cm)  
‡ 313 mm | 12 1/3"  
Ø 180 mm | 7"

BU/P: 48  
BU/L: 12

**H 104160** BU/MP: 1  
PC



FOOTED VASE  
IN GOLD 40 CM  
(651/81/40cm)  
‡ 403 mm | 15 6/7"  
Ø 160 mm | 6 2/7"

BU/P: 48  
BU/L: 24

**H 104163** BU/MP: 1  
PC



FOOTED VASE  
IN PLATINUM  
32 CM (651/81/32cm)  
‡ 313 mm | 12 1/3"  
Ø 180 mm | 7"

BU/P: 48  
BU/L: 12

**H 104161** BU/MP: 1  
PC



FOOTED VASE  
IN PLATINUM  
40 CM (651/81/40cm)  
‡ 403 mm | 15 6/7"  
Ø 160 mm | 6 2/7"

BU/P: 48  
BU/L: 24

**H 104165** BU/MP: 1  
PC

# VASES

## NOBLESSE



**NEW**

VASE 23 CM

(617/97/23cm)

‡ 231 mm | 9"

Ø 120 mm | 4 5/7"

BU/P: 240

BU/L: 40

**H 106017** BU/MP: 2  
PC



**NEW**

VASE 28 CM

(617/97/28cm)

‡ 281 mm | 11"

Ø 146 mm | 5 3/4"

BU/P: 72

BU/L: 24

**H 106383** BU/MP: 2  
PC



# VASES QUARTZ

NEXT  
GEN Design for  
Nachtmann



## VASE OVAL 16 CM

(255/152/16cm)

↓ 160 mm | 6 2/7"

Ø 112 mm | 4 2/5"

BU/P: 360

BU/L: 72

**H 88333** BU/MP: 2

PC

## VASE 26 CM

(255/108/26cm)

↓ 263 mm | 10 1/3"

Ø 124 mm | 4 7/8"

BU/P: 120

BU/L: 40

**H 88332** BU/MP: 2

PC



# VASES

## SAPHIR

## SCULPTURE



VASE 27 CM  
(80/59/27cm)  
‡ 270 mm | 10 5/8"  
Ø 180 mm | 7"

BU/P: 60  
BU/L: 15

**H 80502** BU/MP: 1  
PC



VASE 30 CM  
(80/59/30cm)  
‡ 300 mm | 11 4/5"  
Ø 201 mm | 8"

BU/P: 45  
BU/L: 15

**H 80498** BU/MP: 1  
PC



VASE 33 CM  
(258/17/33cm)  
‡ 331 mm | 13"  
Ø 154 mm | 6"

BU/P: 72  
BU/L: 24

**H 101982** BU/MP: 2  
PC

# VASES

## SQUARE



NEW

### VASE 23 CM

(282/97/23cm)

↑ 231 mm | 9"

Ø 120 mm | 4 5/7"

BU/P: 240

BU/L: 40

**H 97781** BU/MP: 2

PC



NEW

### VASE 28 CM

(282/97/28cm)

↑ 281 mm | 11"

Ø 146 mm | 5 3/4"

BU/P: 72

BU/L: 24

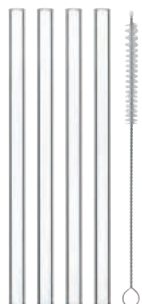
**H 97782** BU/MP: 2

PC





# ACCESSORIES

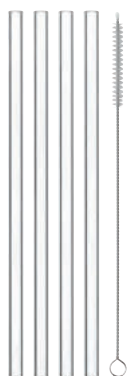


GLASS STRAW 15CM

↓ 150 mm | 6"  
Ø 9 mm | 1/3"

BU/P: 9360  
BU/L: 1040

**H 105381** BU/MP: 130  
SET/4



GLASS STRAW 21CM

↓ 210 mm | 8 1/4"  
Ø 9 mm | 1/3"

BU/P: 6240  
BU/L: 1040

**H 105380** BU/MP: 130  
SET/4



POLISHING CLOTH

(64x50cm)  
↓ 500 mm | 19 2/3"  
Ø 640 mm | 25 1/5"

BU/P: 2160  
BU/L: 240

**H 105050** BU/MP: 20  
PC

# CARE AND USE

## IMPORTANT HINTS FOR GLASS USE

All around the world renowned restaurants use Nachtmann glasses and crystal ware for the setting table. In order to guarantee maximum

pleasure when tasting wine, it is important to consider the following professional hints, which we hope you will find of interest.

---

## FOR A PERFECT RESULT



1. Wash under warm water, detergent is not necessary



2. Place on linen to dry for the time being



3. For extra shine, steam over boiling water



4. To polish use 2 microfibre polishing cloths



5. Hold glass by base and polish



6. Use left hand to cradle the bowl and polish with your right hand

---

## BEVERAGES AND GLASSES

### Rules when handling connoisseur glasses:

#### 1. Filling the glass

Fill the glass only to the widest diameter of its bowl. This will ensure maximum development of the wine's bouquet, and also provide the most elegant table setting.

#### 2. Holding the glass

The appropriately filled glass should always be held by the stem rather than the bowl, as heat from the hand could raise the wine's temperature above its optimum and negatively influence the bouquet of the wine.

#### 3. Swirling the glass

Carefully swirling the glass allows oxygen into the wine by increasing its surface area and helps release the wine's rich, mature aroma.

#### 4. Why and how to decant wines

To decant wine means to transfer it from its bottle to a decanter or carafe before drinking. During storage or aging, wine can develop a solid deposit or sediment at the bottom of the bottle. Decanting is an easy means of separating the sediment from the wine. Decanting also helps the wine

breathe, as the greater surface diameter of the decanter lets more oxygen reach the wine than the bottle's does. Red wines should be decanted well before serving and allowed to rest at room temperature for up to one hour to allow the wine to fully develop its bouquet.

#### 5. Wine temperature

Before decanting and/or serving wine, please store it at appropriate temperature (red wines at 59-63 degrees F, 15°-17° C, white wines at 50-54 degrees F, 10°-12° C).

The proper serving temperature enhances the quality of the wine by allowing it to fully develop its characteristic aromas and flavors.

#### 6. Washing the glass

Glasses should always be washed carefully, preferably by hand. Nachtmann glasses are 100% dishwasher safe (Exception: Gold decorated glasses: NOBLESSE GOLD), but they are best cared for by avoiding harsh detergents and choosing a cool, short dishwashing cycle. To avoid detergent residue, rinse glasses thoroughly in clean water. When drying the bowl of the glass, avoid holding the glass by its stem or base as this can, in extreme cases, cause the stem to break at its narrowest point.



# MERCHANDISE EXAMPLES



NOBLESSE POS

Display size: 110 cm x 125 cm x 138 cm

# MERCHANDISE EXAMPLES



NACHTMANN POS

Display size: 200 cm x 247 cm x 138 cm

# SIZE CHART - PACKAGING

Length:	172 mm	6 7/9"
Width:	172 mm	6 7/9"
Height:	112 mm	4 2/5"
Weight:	1774 gr.	3,92 lb



SAMPLE BILL UNIT  
# 89207 - Noblesse Tumbler SET/4

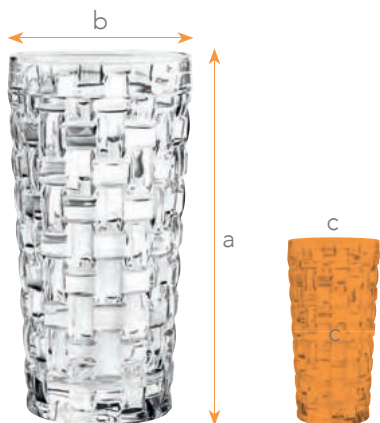
Length:	359 mm	14 1/7"
Width:	184 mm	7 1/4"
Height:	244 mm	9 3/5"
Weight:	7414 gr.	16,37 lb



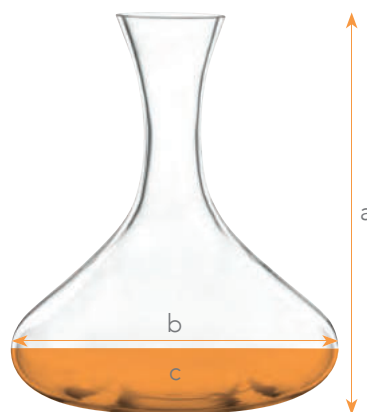
SAMPLE MASTERPACK  
# 89207 - Noblesse Tumbler SET/4

mm = millimeter    1 ounces = 28,350 ml  
 ml = milliliter    1 inch = 2,54 cm  
 gr. = gramm    1 kg = 2,205 lb  
 " = inch  
 oz = ounces

# SIZE CHART - GLASSWARE



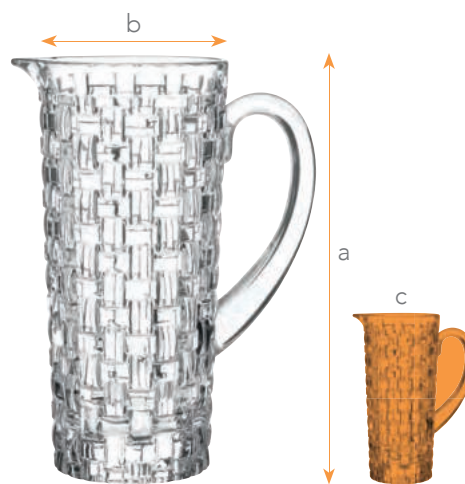
**TUMBLERS**  
 a - Height  
 b - Largest Ø  
 c - Capacity



**DECANTER**  
 a - Height  
 b - Largest Ø  
 c - Capacity



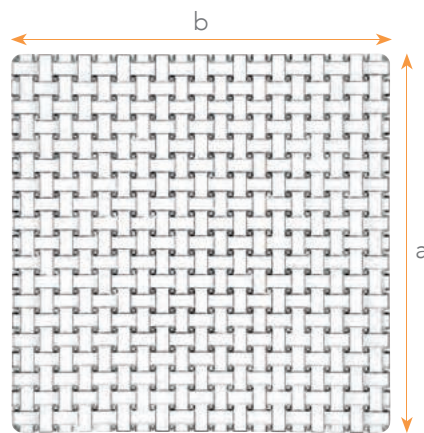
**VASES**  
 a - Height  
 b - Largest Ø



**PITCHER**  
 a - Height  
 b - Largest Ø  
 c - Capacity



**BOWLS**  
 a - Height  
 b - Largest Ø



**PLATES**  
 a - Height  
 b - Length

# GENERAL TERMS & CONDITIONS OF SALE

EFFECTIVE AS OF MARCH 01, 2026, PAGE 1/3

BAYERISCHE GLASWERKE GMBH,

ZACHARIAS-FRANK-STR. 7, 92660 NEUSTADT/WN, GERMANY

## 1. Scope of Application.

All provisions of goods and services by Bayerische Glaswerke GmbH ("BGW") to or for the benefit of each customer of BGW (the "Customer") shall be subject to the General Terms and Conditions of Sale of BGW (the "T&C"), unless otherwise expressly agreed upon in writing and duly signed by BGW in order to be legally effective. By placing an order with BGW for the supply of products sold by BGW (the "Products") and/or services provided by BGW or otherwise accepting the supply of Products and/or services by BGW (or any part thereof), Customer (a) agrees to purchase the Products and services on and subject to the T&C, and (b) acknowledge and agrees that, in respect of any other terms and conditions (including terms and conditions accompanying any purchase order or received from Customer): (i) those other terms and conditions are not effective and BGW will not be bound by them, and (ii) the T&C supersede and replace any such other terms and conditions in their entirety; unless other such other terms and conditions are duly acknowledged and expressly agreed to in writing and duly signed by BGW. For the avoidance of doubt, the acceptance of orders or performance of services by BGW shall not be regarded as the grant of any entitlement to future fulfillment of orders or provision of services by BGW, and nothing in the T&C shall be construed as creating a relationship of exclusivity between Customer and BGW.

The T&C consist out of the following separate documents and form all together the T&C: (a) these General Terms and Conditions of Sale of BGW; (b) the respective printed or digital price books of BGW applicable to the Customer (the "Price Books"); (c) the respective Payment & Delivery Term Sheets of BGW applicable to Customer (the "Payment & Delivery Terms"); (d) the Riedel Corporate Branding Policy & Quality Standards; and (e) the information according to Clause 3.1.

## 2. Orders, Packaging, Quality Control, Marketing Support.

2.1. All orders by Customer (the "Orders", or each an "Order") shall be legally effective and binding on Customer upon acceptance by BGW of each such Order in writing (an "Order Confirmation") or, in the absence of such Order Confirmation, by delivery of the Products comprising such Order to Customer. BGW will communicate expected lead-times of Products in the respective Order Confirmation (in this context see Clause 6.7).

2.2. Customer may only modify or cancel an Order until receipt of the Order Confirmation for such Order by BGW (or, in the absence of such Order Confirmation, delivery of the Products comprising such Order), but under no circumstances shall Customer be permitted to modify or cancel an Order more than five (5) calendar days after placing such Order. Once an Order is confirmed by BGW or delivered to Customer, such Order may not be modified or cancelled by Customer except with the prior written consent of BGW, in which case Customer will be liable to BGW for all costs, expenses and other losses that incur or were incurred by BGW in connection with such modification or cancellation.

2.3. BGW reserves the right, in its own discretion, to: (a) reject any Order at any time before sending the Order Confirmation (or, in the absence of an Order Confirmation, before delivery) without giving any reasons; (b) cancel any Back Orders (see Clause 2.9) at any time on reasonable grounds by giving Customer notice of such cancellation; and/or (c) accept Orders only with respect to amounts that from experience correspond to usual quantities ordered by companies of a comparable size.

2.4. Customer shall comply on all its Orders with all specifications advised by BGW regarding minimum Order values and minimum Product Orders, including those set out in the applicable T&C.

2.5. **Special Orders:** The requirements with regard to minimum Order quantities of Products not listed in BGW's Price Books ("Special Orders") are determined by BGW on a case-by-case basis. Special Orders require a deposit as defined by BGW on an individual case-by-case basis. Special Orders can be combined with any other Orders to meet Order minimums. Special Orders can only be ordered in the amount of full master packs. No cancellations, modifications or (unless the Products are Defective Products, see Clause 8.) returns on Special Orders are permitted.

2.6. **Value Packs:** Value Packs where BGW supports certain benefits (e.g. where packages of Products can be purchased with free Products) must be passed on to the end-consumers in at least the same way. Value Packs may not be unpacked or repackaged by the Customer and the Products contained therein may not be sold individually.

2.7. **Limited Editions:** BGW reserves the right to offer Products marked as "Limited Edition" in a certain amount and for a certain time period and under certain allocation criteria to Customer.

2.8. Glassware marked as "On-Premise Glass Collection/Glassware" (the "On-Premise Products") is reserved for the hospitality industry only, and is not intended for resale, the retail trade and/or for the end-consumer. On-Premise Products are included in BGW's On-Premise Price Books. "Retail Products" means Products designed and manufactured for the purpose of being sold to retailers for further retailing to end-consumers. Retail Products are included in BGW's Retail Price Books.

2.9. **Back Orders:** If an ordered Product is out of stock, BGW will immediately notify Customer, and will automatically place the Product on back order, and send the stock as soon as it becomes available ("Back Order"). If Customer does not want the Product comprising such Back Order, Customer shall advise BGW within five (5) calendar days after receipt of such notification accordingly in writing, otherwise Back Orders cannot be modified or cancelled by Customer. All Back Orders are subject to cancellation at any time on reasonable grounds by BGW in accordance with Clause 2.3 in the event of cancellation, Customer will be refunded accordingly for any consideration already paid.

2.10. Customer acknowledges that the packaging of the Products and the labelling of the Products as applied by BGW is critical to maintain the brand recognition and image of the respective Brands (as defined in Clause 3.2). Consequently without the explicit prior written authorization of BGW, Customer shall not modify, remove, deface, obscure, cover up, or otherwise make illegible or unreadable any unique identifying mark, tag, scan code, or identification number (including but not limited to bar codes, RFID's, and QR codes) that is howsoever affixed to any Product or its packaging.

2.11. Products shall not be unpacked from their original packaging as shipped by BGW to Customer or be repacked by Customer. Instead, Products shall be sold by Customer in its respective original packaging, unless the unpacking and/or repacking was firstly expressly authorized by BGW in writing (collectively, "Authorized Packaging Changes").

2.12. In case of Authorized Packaging Changes, Customer shall ensure that such Products and the packaging used by Customer (the "Customer Packaging") comply with all applicable laws, rules, and regulations, including but not limited to those laws, rules, and regulations that concern such Products

and Customer Packaging's labelling, marking, tagging, waste management, boxing, marketing, storage, distribution, handling, cleaning and sale, and Customer shall indemnify, defend, and hold harmless BGW and its affiliates for any violations or alleged violations thereof. BGW and its affiliates shall not be responsible for and Customer shall indemnify, defend and hold BGW and its affiliates harmless from, and against, any and all claims, suits, losses, damages, demands, injuries, costs and expenses (including reasonable attorney's fees) arising out of or related to Authorized Packaging Changes, including but not limited to any damage or loss arising out of the labelling, marking, tagging, waste management, boxing, marketing, storage, distribution, handling, cleaning and/or sale of the Products or of the Customer Packaging.

2.13. In the event that Customer elects to purchase BGW's Product comprising two wine glasses within packaging permitting Customer's inclusion of one bottle of wine (the "2 Glasses 1 Bottle Product"), Customer shall ensure that the 2 Glasses 1 Bottle Product complies with all applicable laws, rules, and regulations, including but not limited to those laws, rules, and regulations that concern such 2 Glasses 1 Bottle Product's labelling, marking, tagging, waste management, boxing, marketing, storage, distribution, handling, cleaning and sale, and Customer shall indemnify, defend, and hold harmless BGW and its affiliates for any violations or alleged violations thereof. BGW and its affiliates shall not be responsible for and Customer shall indemnify, defend and hold BGW and its affiliates harmless from, and against, any and all claims, suits, losses, damages, demands, injuries, costs and expenses (including reasonable attorney's fees) arising out of or related to 2 Glasses 1 Bottle Products including but not limited to any damage or loss arising out of the labelling, marking, tagging, waste management, boxing, marketing, storage, distribution, handling, cleaning and/or sale of the 2 Glasses 1 Bottle Products.

2.14. BGW's claims under Clauses 2.12. and 2.13. shall not apply if the damage is attributable to a breach of duty or (contributory) negligence on the part of BGW.

2.15. The Customer understands that BGW's ability to exercise proper control of the compliance with ethical principles and to effect proper quality control measures, including but not limited to quality control oversight over the Brands, Trademarks and the Products, requires BGW's unfettered ability to track its inventory at all stages of the Products' global supply chain. Accordingly without the explicit prior written authorization by BGW, Customer acknowledges and agrees that it will not under any circumstances modify, remove, deface, obscure, cover up, or otherwise make illegible or unreadable any unique identifying mark, tag, scan code, or identification number (including but not limited to bar codes, RFID's, and QR codes) that is howsoever affixed to any Product or its packaging.

2.16. In the event that Customer, as determined by BGW in its own discretion, is found to have violated any part of Clause 2.6, 2.10, 2.11, 2.12, 2.13 or 2.15, BGW shall be entitled to immediately suspend or terminate Customer's status as an authorized purchaser and/or reseller of the Products, and BGW shall reserve all rights and remedies it may have against Customer that may be available to BGW pursuant to the T&C, any other agreement entered into or otherwise governing the relationship between BGW and Customer, applicable law, or otherwise.

2.17. BGW does not provide Customers with any kind of marketing support, unless decided by BGW in its own discretion on an individual case-by-case basis. In the event that BGW elects to grant any kind of marketing support to Customer, under no circumstances shall BGW be obligated to complete or otherwise continue such marketing support or provide any future marketing support. In the event that for any reason, as determined by BGW in its own discretion, the Customer's status as an authorized purchaser and eventually reseller of the Products, as applicable, is suspended or terminated, BGW reserves the right to terminate any marketing support with immediate effect or until further notice, and BGW will not accept any invoice deductions for marketing support following any suspension or termination. Under no circumstances and at no time shall Customer be entitled to reimbursement for any kind of investments, or for any costs/expenses of promotional events or of promotional material of any kind whatsoever regarding the Brands (see Clause 3.2.), irrespectively if Customer organized such events itself or via third parties or purchased such material from BGW or from a third party.

## 3. Customer Obligations.

Customer hereby agrees to at all times observe and abide by the obligations (the "Customer Obligations") as outlined in this Clause 3.

3.1. Retail-Customers may sell Retail Products received from BGW to end-consumers.

Active sales to certain groups of resellers or to any kind of resellers in certain territories, which BGW has reserved for itself or exclusively allocated to third party dealers are prohibited. The groups of resellers and territories reserved or exclusively allocated in this way are listed in Annex 3.1. BGW shall inform Customer of any changes in a timely manner. These restrictions on active sales must be observed not only by the Customer itself, but also by its direct customers. Customer shall impose these restrictions on active sales on its direct customers.

Passive sales are excluded from the above restriction. Regulations in the selective distribution system remain unaffected by this Clause 3.1.

3.2. Customer acknowledges its obligation to maintain and to promote the extremely high standard of the Products reputation as comprising some of the world's finest glassware, the goodwill symbolized by the "Spiegelau", "Nachtmann" and "Riedel" brands (together the "Brands"), and the associated trademarks (the "Trademarks") and trade dresses and Products, and to further refrain from any conduct that could be viewed as disparaging on the image of the Products, the Brands, the Trademarks, BGW, and its affiliates, and shall include, but shall not be limited to, the selling of the Products to or via low-cost mass merchandisers or low-cost discount stores that were not specifically authorized by BGW in writing, and the selling of the Products next to other goods that are infringing upon the intellectual property rights of BGW or of its licensors.

3.3. Customer will conduct and maintain at all times its business as it relates to the Products in compliance with the T&C, and all applicable laws and regulations. Customer agrees not to engage in any unfair trade practices.

3.4. Customer will comply with all quality control standards, including, but not limited to, advertising, storage, and shipping requirements, as notified from time to time by BGW. Any changes made by BGW to such standards will apply to future Orders placed following such notification.

3.5. Customer will comply with the Riedel Corporate Branding Policy & Quality Standards. BGW reserves the right to change the Riedel Corporate Branding Policy & Quality Standards from time to time by notification to the

Customer, with any such changes applying to future Orders placed following such notification.

3.6. If Customer is found to have culpably breached (even in part) any of Customer's obligations contained in Clause 3., Customer shall indemnify BGW against any costs and liabilities, including litigation costs and attorneys' fees incurred in the defence of any civil, criminal or administrative action, complaint or claim against BGW, its affiliates or its officers, employees or agents arising out of a breach of any provision of Clause 3.

3.7. If Customer is found to have culpably breached (even in part) any of Customer's obligations contained in Clause 3., BGW shall, in its own discretion, be entitled to suspend or terminate Customer's status as an authorized purchaser and/or reseller of the Products with immediate effect, and BGW reserves all rights and remedies available to BGW under the T&C, any other agreements entered into or otherwise governing the relationship between BGW and the Customer, or applicable law, or otherwise. In such cases, BGW is also entitled to cancel confirmed Orders.

## 4. Prices.

4.1. The prices for the Products and/or services are as set out in the respective applicable Price Books and Payment & Delivery Terms provided to Customer by BGW from time to time. BGW in its own discretion, reserves the right to change the Product assortment and/or the service assortment as well as the prices for the Products and/or services at any time, with such changes applying to future Orders placed.

4.2. All prices are stated in Euro, or – at BGW's own discretion – in another currency depending on the Customer address. Unless otherwise stated in the respective applicable Price Books or Payment & Delivery Terms all prices are stated net per sales unit. EX WORKS (EXW), INCOTERMS 2020 BGW warehouse ("EXW BGW Warehouse"), Germany, excluding the shipping packaging. Prices are exclusive of statutory VAT or other taxes, fees or duties. If VAT is payable, it will be stated separately in BGW's invoice. BGW issues its invoices in Euro, or – at BGW's own discretion – in another currency depending on Customer's address, whereby the prices applicable at the time of the Order shall apply.

4.3. Unless otherwise agreed in writing with the Customer, BGW shall choose the shipping packaging at its own discretion. The Customer shall be invoiced for crates, Collico containers, cartons, etc. If VAT is incurred for the provision of the shipping packaging, this shall be shown separately in the BGW invoice in accordance with the applicable statutory provisions.

4.4. If Products are dispatched at Customer's request, the Customer will also be invoiced for the shipping costs (see Clauses 6.3 and 6.4).

## 5. Terms of Payment.

5.1. The payment terms are regulated in the respective applicable Price Books and/or Payment & Delivery Terms. BGW reserves the right upon notice to the Customer in its own discretion (a) to change the payment terms at any time, with such changes applying to future Orders placed, and/or (b) to suspend or refuse fulfillment of any contract with Customer, if in the opinion of BGW, this is necessary due to Customer's financial situation or payment history.

5.2. Where no special payment terms apply for certain delivery regions or certain Customers pursuant to the applicable Price Books or Payment & Delivery Terms, BGW's invoices are payable as follows:

(a) in case of payment by means of direct debit, less discount of 3%;

(b) within thirty (30) calendar days as of invoice date, without any deduction.

5.3. BGW may ask for a payment confirmation to be issued by a bank accepted by BGW. Payment will be deemed effected as soon as BGW is able to freely dispose of the same at its registered office.

5.4. An eventually granted cash discount may only be deducted, if any and all invoices due have been fully settled by Customer.

5.5. Each delivery by instalment shall be deemed an independent transaction for billing and payment purposes.

5.6. If payments are effected in any freely convertible currency other than the invoicing currency, Customer shall bear the exchange rate risk.

5.7. Any bank charges in connection with invoice payments shall be borne by Customer.

5.8. Any claims, counterclaims or compensation claims of Customer shall not entitle Customer to extend the granted payment period, nor shall any such claims or counterclaims be used to offset or otherwise be used to justify the non-payment of any amounts owed to BGW by Customer. Notwithstanding the above, offsetting is possible if the claim, counterclaim or claim for remuneration is undisputed or has been recognized by declaratory judgment.

5.9. From the date of default, default interest of 9% points above the base interest rate of the German Central Bank per annum will be charged.

5.10. BGW is not obliged to accept checks or bills of exchange; they will only be credited as payment subject to them actually being honoured to the value to which they are at disposal. All costs incurred in connection with acceptance of bills of exchange or checks, in particular discounting charges and interest, shall be borne by the Customer.

5.11. If (a) Customer defaults in payment under the T&C and has not remedied that failure within five (5) calendar days; OR (b) all or substantially all of the assets of Customer are sold or otherwise transferred; OR (c) there is a change in control with respect to Customer; OR (d) the legal form of Customer is changed; OR (e) in the reasonable opinion of BGW, Customer's financial situation changes or deteriorates materially (e.g. a bill of exchange or cheque provided by Customer is not honoured); OR (f) at any time BGW considers (acting reasonably) that Customer is a credit risk, THEN:

(i) Customer's account will be put on immediate and automatic credit hold, and BGW will not accept any new Orders, and BGW may refrain from fulfilling/processing any and all existing or future Orders of the Customer; (ii) all outstanding accounts receivable, also under bills of exchange, will be come due for immediate payment irrespective of their due date; and (iii) BGW shall be entitled to suspend (until the matter has been resolved or the outstanding amount including interest has been credited to BGW's account), terminate or cancel all current contracts and/or Orders; and (iv) BGW shall be entitled to stop all deliveries to Customer, to request damages from Customer in lieu of performance, require pre-payment or proper security before making any delivery, or effect delivery only against full cash amount payable on delivery (if Customer has already advanced any payments in relation to terminated or cancelled Orders, BGW will refund those amounts or allocate/offset them accordingly); and (v) BGW will retain title to Products that have not been paid for as described under Clause 12. and BGW may consequently demand the return and collect any such Products that are in the possession, custody or control of the Customer.

# GENERAL TERMS & CONDITIONS OF SALE

EFFECTIVE AS OF MARCH 01, 2026, PAGE 2/3  
BAYERISCHE GLASWERKE GMBH,  
ZACHARIAS-FRANK-STR. 7, 92660 NEUSTADT/WN, GERMANY

## 6. Terms of Delivery and Passing of Risk.

6.1. The delivery terms applicable to Customer are regulated in the respective applicable Price Books and/or Payment & Delivery Terms. BGW reserves the right upon notice to the Customer in its own discretion to change the delivery terms at any time, with such changes applying to future Orders placed.

6.2. Unless otherwise stated in the respective applicable Price Books or Payment & Delivery Terms or agreed in writing by BGW, all deliveries will be effected EXW BGW Warehouse, Germany, per address RSN Logistik GmbH, Weiden i.d. Opf., Germany.

6.3. In case the respective applicable Price Books or Payment & Delivery Terms offer accordingly and if so requested by Customer and confirmed in writing by BGW, Products can be shipped to a different destination at Customer's cost and sole risk. Save when otherwise agreed, BGW is entitled to determine the kind of shipment (in particular the forwarding agency, shipment route, packaging).

6.4. If Products are shipped to a different destination upon Customer's request and BGW's written confirmation, the risk shall pass to Customer on the Products' handover to the person designated to carry out shipment. Customer shall assume all risk to Products during transportation thereof, BGW shall not be obligated to replace or credit Customer for Products that are stolen, lost, broken, damaged, or otherwise altered during or as a result of their transportation, and Customer shall be solely responsible for filing any and all claims for loss or damage with the responsible entity or entities.

6.5. BGW shall insure the Products only if specifically, so instructed by Customer in writing and on behalf of Customer's account and expense.

6.6. If Products are delivered on Euro pallets, Customer shall ensure the documentation required to clear Euro pallets through pallet accounts and to submit such documentation to BGW on request.

6.7. Deliveries will be made by BGW according to its operational capabilities. Communicated lead-times refer to EXW BGW Warehouse dates and are estimates only and are not binding; lead-times for Special Orders and Limited Editions will be communicated to Customer on a case-by-case basis refer to EXW BGW Warehouse dates and are estimates only and are not binding. BGW shall not be liable for failure to meet these non-binding lead-times. Claims for damages in this respect due to non-performance or late performance are excluded, and the Customer waives all claims against BGW and its affiliates for damages and other liabilities arising out of or due to actual or alleged non-performance or late performance by BGW.

6.8. BGW will observe commercially reasonable efforts in its observance of the T&C, which observance shall be subject to unforeseeable events or events not otherwise contemplated by the T&C. BGW will not be responsible for any delay or failure to perform its obligations under the T&C or otherwise, which arises out of or is due to unforeseeable events or events independent of the intention of the parties, such as events of force majeure ("Force Majeure Event"), including, by way of example and not of limitation, all events of pandemics, epidemics, war, terrorist actions, interventions, instructions and prohibitions of official authorities, delays in transport and customs clearance, transport damage, inclement weather, lack of energy, financial crisis, labour conflicts as well as delays in delivery on the part of suppliers for any reasons. Delivery times shall be extended accordingly reasonably in the event of Force Majeure, whereby BGW may also cancel the delivery in whole or in part after the expiry of three (3) months after the occurrence of the Force Majeure Event, unless there is merely a temporary impediment to performance. The applicable payment terms shall remain unaffected. In the event of a full or partial cancellation, BGW will inform Customer immediately thereof, and eventual payments made by Customer in advance shall be reimbursed in the corresponding proportion or shall be offset against outstanding receivables.

6.9. Retail Products are shipped in brown master packs (order units). The purpose of the master pack is to protect the inner packaging from scratching and other damages only. Customer acknowledges that a master pack is not designed to be used as a re-shippable outer carton and may not be used as such. If in spite of the foregoing, a master pack is used for re-shipment of Products, the shipping of those Products shall be at Customer's own risk and BGW shall have no liability to the Customer in connection with any damage to those Products.

6.10. The cost of any requested or necessary special packaging and/or the use of special packaging materials for the Products are at Customer's sole expense even if these costs were not explicitly listed in the Price Books or the quotation. Customized packaging shall not be offered or provided to Customer unless Customer and BGW enter into a separate agreement duly signed by the parties in relation to such customized packaging.

6.11. Regarding Special Orders, BGW reserves the right to supply the quantity deviations of +/- 5% of the quantity ordered (the "Permitted Deviation"), which is customary within the industry. Provided that BGW's fulfillment of any Special Order is within the Permitted Deviation, the quantity actually delivered shall be paid by Customer in full.

6.12. If, pursuant to an Order Confirmation, Products are to be collected at a BGW warehouse, BGW will inform Customer about twenty (20) business days prior of the respective delivery/collection date. Partial deliveries of an Order (i.e. deliveries by instalments) are permitted, provided this is reasonable for the Customer. Customer shall pick-up all available and pre-prepared Products, including reasonable partial deliveries of an Order, within ten (10) business days as of the notified delivery date. If Customer informs BGW that Customer will not collect the respective delivery or if Customer fails to pick such delivery within this ten (10) business days window, BGW shall be entitled to either (a) partially or in total cancel the respective Order or (b) to store the Products at Customer's cost and risk, in which case the delivery to Customer shall be deemed to have been fulfilled and will be invoiced, and to charge storage costs for such Products at the customary local rate. In the event of cancellation, BGW will inform the Customer thereof without delay, and refund any payments already made for the cancelled Products or offset them against outstanding claims.

6.13. If Products are to be shipped to a different destination according to the respective Order Confirmation (see Clauses 6.3 and 6.4) and are ready for shipment, but cannot be shipped through no fault of BGW, or if Customer does not want such Products to be shipped, BGW is entitled at its own discretion to either (a) partially or in total cancel the respective Order, or (b) to store the Products at Customer's cost and risk, and BGW is entitled to charge storage costs for such Products at the customary local rate. In the event of cancellation, BGW will inform the Customer thereof without delay, and refund any payments already made for the cancelled Products or offset them against outstanding claims.

6.14. Purchase for Export: If Customer purchases Products for export, Customer shall assume sole responsibility for proper customs clearance. Customer shall provide proof, in appropriate form, of customs clearance upon BGW's request.

6.15. Customer shall provide proof, in appropriate form, of customs clearance upon BGW's request.

## 7. Partial Deliveries.

Partial deliveries are permissible insofar as this is reasonable for the Customer and may be invoiced. If BGW delivers Products in instalments and if such an instalment contains Defective Products as defined in Clause 8., this shall not entitle the Customer to withdraw from the entire purchase contract formed by the T&C.

## 8. Notice of Defects, Warranty.

8.1. As regards inspection and notification requirements, Sec. 377 of the German Commercial Code (Handelsgesetzbuch -HGB) shall apply, provided that obvious defects shall be notified within ten (10) business days as of delivery of the Products and in any event prior to their use or re-sale. If there is no such notification of BGW, the Products shall be deemed accepted by Customer, unless the defect was not discernible in the examination. Latent defects shall be notified immediately after their discovery; otherwise, the Products will be deemed accepted by Customer as well in view of these defects.

8.2. Any defects or non-compliances with the contract shall be notified to BGW in writing, including a detailed description and photos of the alleged defects or the non-compliances. BGW will provide the remedy described in Clause 8.8 if there are any defects in a Product or non-compliances with the contract (including partial deliveries), which are recognisable upon proper inspection of the Product at the time of delivery and which are notified in writing by Customer to BGW within ten (10) business days from the date of delivery of the Product or in the case of latent defects immediately after they are recognized (the "Defective Product"); otherwise the Products shall be deemed accepted by Customer. Complaints under this Clause 8. are subject to a review and approval process.

8.3. Customer must keep any Defective Products in its possession until BGW has inspected the Defective Products and either approved or rejected the Customer's warranty claim under this Clause 8. The inspection can be done either by photos, by on-site inspection or by collecting the Defective Products. Warranty claims under this Clause 8. shall be notified to BGW using the contact information: Bayerische Glaswerke GmbH, Zacharias-Frank-Str. 7, 92660 Neustadt an der Waldnaab, Germany, info@nachtmann.com.

8.4. Any defects or non-compliances with the contract caused as result of a Force Majeure Event shall be excluded from BGW's warranty.

8.5. No warranty is provided by BGW for mechanical damages to the surface of a Product.

8.6. Customer shall assume all risk for the Products during transportation thereof and BGW shall not be obligated to replace or credit Customer for Products that are stolen, lost, broken, damaged, or otherwise altered during or as a result of their transportation; the Customer shall assert any claims in this respect against the responsible carrier.

8.7. Customer acknowledges that minor deviations may occur between Products from the same series for technical reasons and because of the materials used in the course of the production of glass products, in particular with respect to size, weight, ovality, or the vertical axis according to the relevant technical drawings, which cannot be influenced by BGW. Handmade Products or handmade Product parts may be subject to sample and size deviations. Therefore, all such deviations between Products, in particular compared to drawings or earlier deliveries of the same Product, do not constitute any defect. Customer further acknowledges that due to the handling involved in the making of some decanters and glassware, tiny bubbles, slight imperfections, surface variations, and small tolerances in the size and weight of each piece, are a feature and acceptable part of the process and do not constitute any defect.

8.8. In case of a valid claim in respect of any Defective Product, and subject to Clauses 8.6, 8.7, 8.11, 8.14 and 8.15, BGW will, at its own discretion, either arrange delivery of a replacement Product (subject to its operational capabilities) or issue a credit note for the price paid by Customer to BGW for the Defective Product, but not both.

8.9. If BGW chooses to arrange delivery of a replacement Product (or otherwise requires the Customer to return the Defective Product), Customer is required to return the Defective Product at Customer's cost and risk to the warehouse determined by BGW.

8.10. Any and all other warranty claims of Customer shall be excluded.

8.11. The rights described in Clause 8.8 do not apply and BGW will not replace any Products broken or damaged if master packs are used for shipping (see Clause 6.9).

8.12. Damaged packaging is not replaceable or refundable.

8.13. If BGW provides a substitute delivery, BGW shall bear the costs for the inspection and the replacement delivery, including the transport, labour and material costs for the replacement delivery, provided that a defect actually exists. In case Customer's demand for remedy of a defect/non-compliance proves to be unjustified, BGW is entitled to demand from the Customer the reimbursement of all cost incurred by the unjustified claim.

8.14. The rights described in Clause 8.8 do not apply if a defect/non-compliance arises because Customer fails to observe BGW's or a manufacturer's Product or Product packaging instructions, recommendations or guidelines, in particular instructions, recommendations and guidelines for processing, handling, care, cleaning and use of the Product, or by failing to observe generally accepted practices relating to the use of the Product.

8.15. Decorations of any kind not been made or commissioned by BGW, such as engravings, silk-screenings etc., are the sole responsibility and risk of Customer. BGW will not be responsible and shall be excluded from any warranty whatsoever, especially but not limited to that heavy metals or other dangerous materials are applied to the Products, or if the material used is hazardous to health, or not water-resistant or dishwasher-proof. Customer shall indemnify and hold BGW and its affiliates harmless from and against any and all claims, actions, losses, damages, demands, injuries and costs (including reasonable attorneys' fees) arising out of any claim made against BGW for decorations of any kind whatsoever (e.g. engraving, screen printing, etc.) applied to the Products by the Customer or by third parties not authorised by BGW.

## 9. Limitations of Liability.

9.1. In the event of damage, BGW's liability - irrespective of the legal grounds - shall be limited in each case in accordance with this Clause 9.

9.2. Unless expressly provided for in an individual contract with Customer or in the T&C, BGW does not assume any warranties or guarantees beyond those required by law with regard to the nature, merchantability, description, quality or suitability of the Products or the fitness of the Products for a particular purpose or with regard to design, assembly, installation, materials or workmanship of the Products.

9.3. BGW's maximum aggregate liability under or in connection with the T&C or any provision of the T&C, whether in contract, tort (including negligence) or otherwise, shall be limited for each Order to the amount paid by the Customer for that Order.

9.4. BGW shall not be liable for damage caused if and to the extent that instructions, recommendations or specifications relating to the processing, handling, use, care or cleaning of the Products or the Product packaging or generally recognised practices relating to the use of the Product are not observed by the Customer or its customers or by third parties, unless the Customer proves that the damage would have occurred even if the instructions, recommendations or specifications relating to the Product or the Product packaging had been observed.

9.5. BGW shall not be liable or responsible for any damages and Customer shall indemnify and hold BGW harmless from any claims or actions brought against BGW or any of its affiliates and from all losses, damages, claims, injuries, costs and expenses (including reasonable attorneys' fees) arising out of or related to Customer's purchase, handling, storage, packaging, labelling, distribution, advertising, use or cleaning of the Products.

9.6. The Customer shall not be entitled to and hereby releases BGW and its affiliates, officers, employees and agents from any further claims, including but not limited to (a) compensation payments, and (b) compensation for indirect or consequential or punitive damages of any kind, which the Customer or others may suffer, including but not limited to damages (i) for loss of profits or business interruption, (ii) for loss of goodwill, (iii) for loss of savings or opportunity, whether in contract, tort (including negligence) or otherwise.

9.7. BGW shall only be liable for damages to the extent caused by gross negligence or willful misconduct. BGW shall not be liable for slight negligence.

9.8. All limitations of liability in the T&C (including Clause 2.14) shall not apply:

a) to any damage resulting from injury to life, limb or health; or

b) in the event of damage resulting from a willful or grossly negligent breach of duty; or

c) in the event of damages arising from a breach of a material contractual obligation or an obligation that is essential for the proper fulfilment of the contract and on which customers may regularly rely (so-called cardinal obligations); in these cases, however, BGW's liability is limited to the typical, foreseeable damage;

d) insofar as mandatory statutory provisions, e.g. the German Product Liability Act, conflict with the respective matter.

9.9. Clause 9.8 shall not apply to damages that are based solely on a breach of duty by the Customer, in particular in the cases of Clauses 9.4 and 9.5.

9.10. BGW's liability is otherwise excluded. The costs of asserting a claim shall be borne by the Customer.

## 10. Returns.

Except for any Defective Products that are returned in accordance with Clause 8., all other returns are subject to BGW's express prior written approval and the following conditions: (a) Special Orders, Limited Editions, Products that were un- or re-packed from the original boxes by Customer, 2 Glasses 1 Bottle Products, Products that have Authorized Packaging Changes or Products that are engraved, decorated or are personalized in any other way cannot be returned and will not be reimbursed; (b) returned Products must be part of the current BGW Price Books and in unused, mint, resalable condition, packed in the original undamaged boxes and in the original sealed master packs; (c) returns must be shipped within thirty (30) calendar days after having received BGW's prior written approval and must be delivered to the warehouse determined by BGW, and freight, risk and costs are at Customer's expense and responsibility; (d) for Products returned in accordance with this Clause 10, the EXW BGW Warehouse, Germany, Product net price paid by the Customer for the respective Product will be credited minus a 15% restocking and handling fee. Any returns not in conformity with the foregoing may be refused by BGW and will be not reimbursed.

## 11. Intellectual Property Rights.

11.1. BGW or its licensors hold any and all rights, titles, all goodwill and all other claims and interests of any nature whatsoever, including any and all intellectual property rights such as copyrights, trademark rights, labeling rights, trade secrets, design patent rights, patent rights and/or design rights, relating to the Products, the Product designs, the Product packaging, the glassware samples, the glassware sample designs, the designs of the glassware and of the prototypes, and as well of any modifications, further developments and adjustments thereof, including the respective drawings, tools, moulds, casting forms and Product packaging.

11.2. Any and all products, samples, drawings and packaging, including the manufacturing drawings, the Product packaging, Product and packaging samples and prototypes, provided by BGW to the Customer are protected by intellectual property rights, namely copyright, trademark rights, labeling rights, trade secret, design patent rights, patent rights and/or design rights, which are held exclusively by BGW or by BGW's relevant licensor.

11.3. Any and all tools, moulds, drawings, plans and prototypes provided by BGW to the Customer are the sole property of BGW, including but not limited to any and all intellectual property, even if Customer bears the costs of their acquisition in part or in full, and will not be handed over or refunded at the end of any kind of cooperation or contract.

11.4. In order to identify the Products, the Customer is entitled to use the Brands and/or Trademarks affixed to the unaltered and originally packaged Products or their packaging. However, by doing so, the Customer does not acquire any rights or licenses to the Brands, Trademarks or other intellectual property of BGW or its licensors. The Customer undertakes to refrain from any other use of the Brands or Trademarks, and any other proprietary material of BGW or of BGW's relevant licensor.

11.5. Any use of the Brands, the Trademarks, or of any other intellectual property of BGW or of BGW's licensors, as well as photos or videos thereof, in publications, electronic (internet) advertising, social media, or printed matter is only permitted upon prior written authorization of BGW. In addition, Customer undertakes not to use any marks or signs that are likely to be confused with those of BGW or of BGW's licensors, or with "Spiegelau" or "Nachtmann" or "Riedel" or similar marks or signs or to have them protected in whatever form, in any jurisdiction.

11.6. Any and all materials and related documents provided by BGW to the Customer, together with all right, title and interest in and to the intellectual property, including but not limited to the Trademarks, the Brands, the trade dress or other proprietary material of BGW and its licensors, including goodwill and copyright, in and to or relating to the Trademarks, Brands, trade dress and Products incorporated therein or associated therewith, shall remain the sole and exclusive property of BGW and/or its licensors.

11.7. Any and all materials provided by BGW to the Customer such as cata

# GENERAL TERMS & CONDITIONS OF SALE

EFFECTIVE AS OF MARCH 01, 2026, PAGE 3/3

BAYERISCHE GLASWERKE GMBH,

ZACHARIAS-FRANK-STR. 7, 92660 NEUSTADT/WN, GERMANY

logues, brochures, packaging, illustrations, photos, videos, and the like as well as samples and designs always remain the intellectual property of BGW or BGW's licensors, protected by the relevant statutory provisions regarding reproduction, imitation, competition, etc. Customer undertakes not to make any such material and documents available to third parties, either in whole or in part, without the prior written authorization of BGW or to use them for any purpose apart from the purpose for which they were handed over to Customer.

In case an authorization is granted allowing Customer to make such material and documents available to third parties, Customer shall be obliged to impose all obligations arising out of the T&C that are relevant to such material and documents upon such third party. Customer remains liable to BGW for any acts or omissions of such third party, and Customer shall hold BGW harmless from any and all claims and expenses (including reasonable attorney's fees) arising out of or related to any such acts or omissions. If no Order is placed and/or upon request of BGW, Customer must return all material and documents provided by BGW.

**11.8.** Any use of the Brands, the Trademarks or of any intellectual property rights of BGW or of BGW's licensors as e-mail address or domain name or on social media platforms such as Facebook, X, Instagram, TikTok etc. or any setting up of a "Riedel", "Spiegelau" or "Nachtmann" account on any social media platforms shall only be permitted upon BGW's explicit prior written approval.

## 12. Retention of Title.

**12.1.** Products and samples supplied by BGW shall remain the property of BGW ("Reserved Goods") until full payment (including any interest) of all present and future claims and demands of BGW under the purchase contract and an existing business relationship (including current account balance claims). The Customer is obliged to treat the Reserved Goods with care. The Customer is obliged to store the Reserved Goods properly and to insure them at its own expense against theft, water, fire, transport and other damage.

**12.2.** The Customer may sell the Reserved Goods subject to retention of title in the ordinary course of business in compliance with the provisions of the T&C, provided that Customer is not in default of payment. The Customer may not encumber, pledge or transfer by way of security the Reserved Goods.

**12.3.** The Customer may remodel or process the Reserved Goods in the normal course of business. The remodelling or processing of the Reserved Goods shall always be carried out on behalf of BGW. If the Reserved Goods are processed together with other items that are not the property of BGW, BGW shall acquire co-ownership of the new product in the ratio of the invoice value of the Reserved Goods (invoice amount plus VAT) to the other items that are processed.

**12.4.** The Customer hereby assigns to BGW all claims it has against its own customers from the sale of the Reserved Goods, as well as claims relating to the Reserved Goods that arise against its own customers or third parties on other legal grounds, including any current account balance claims. BGW hereby accepts this assignment. In cases in which BGW has only acquired co-ownership of a new product pursuant to Clause 12.3, the Customer shall only assign the claim in part, namely in the ratio of the value of the Reserved Goods to the value of the new product.

**12.5.** The Customer may collect a claim assigned to BGW as long as BGW does not revoke this authorisation. BGW's right to collect such claims itself shall not be affected thereby; however, BGW shall neither assert nor collect the claims itself and shall not revoke the direct debit authorisation as long as the Customer duly meets its payment obligations. The Customer may also not assign any receivables in order to have them collected by means of factoring unless the Customer irrevocably obliges the factor to provide the consideration directly to BGW for as long as BGW has outstanding receivables from the Customer.

**12.6.** In the event of seizure of the Reserved Goods by third parties or other interventions by third parties, the Customer must draw attention to BGW's ownership and notify BGW immediately in writing so that BGW can enforce its ownership rights. If the third party is unable to reimburse BGW for the judicial or extrajudicial costs incurred by BGW in this connection, the Customer shall be liable for such costs.

**12.7.** In the event that the Customer acts in breach of contract, in particular in the event of default in payment, BGW may demand that the Customer informs BGW of the assigned claims and the respective debtors, notifies the respective debtors of the assignment and hands over to BGW all documents and records and provides at its own expense all information required by BGW to assert the claims.

**12.8.** In the event of behaviour by the Customer in breach of contract, in particular in the event of default in payment, BGW shall be entitled to take back the Reserved Goods after setting a reasonable deadline for performance. The Customer shall bear the costs incurred in taking back the Reserved Goods. If BGW takes back the Reserved Goods, this shall be deemed a cancellation of the contract. BGW has the right to dispose of the Reserved Goods. The proceeds from such disposal shall be set off against any amounts owed by the Customer to BGW after deduction of reasonable costs of such disposal.

**12.9.** Should the value of the assigned claims or other securities exceed the claims of BGW to be secured by more than 10 %, BGW shall have the right to dispose of the assigned claims to this extent. However, BGW is authorised to select the securities to be released.

## 13. Setoff and Assignment.

**13.1.** Customer can only set off against BGW's claims for payment of the purchase price where Customer's claim proposed for setoff has been legally established by final judgement or is undisputed.

**13.2.** BGW is entitled to assign its claims against Customer to a factoring company for financing purposes.

## 14. Data Protection and Storage, Advertising.

BGW shall store and process personal information obtained from the Customer in compliance with applicable privacy laws. Unless the Customer requests otherwise in writing (including through any opt-out mechanism provided by BGW), the Customer agrees that such personal information may be used by BGW for marketing purposes. For clarity, this right survives termination or expiry of the contract of sale.

## 15. Severability.

If any provision of the T&C is wholly or partially void or unenforceable, that provision shall be severed from the T&C to the extent that it is void or unenforceable and the validity of the remaining provisions shall not be affected. The Parties shall agree on a new effective provision which comes as close as possible to the economic purpose of the void or ineffective provision without delay.

## 16. Choice of Law and Jurisdiction.

**16.1.** The T&C and the contractual relations with Customer including its pre- and post-contractual phases and effects shall be governed by and shall be interpreted in accordance with **German law**, excluding its conflict of law rules, and excluding those provisions of private international law which would lead to the application of another legal system, and excluding the provisions of the UN Sales Law (CISG – United Nations Convention on Contracts for the International Sale of Goods).

**16.2. Munich, Germany**, shall have exclusive jurisdiction for any disputes arising out of the contract concluded with Customer or the T&Cs underlying the contract, including the pre- and post-contractual phases and effects. However, BGW is free to sue at Customer's registered office. Mandatory statutory provisions, in particular with regard to the exclusive place of jurisdiction, shall remain unaffected.

## 17. Miscellaneous.

**17.1.** For the purpose of the T&C, "business days" shall mean those days on which banks are open for general business in Bavaria, Germany.

**17.2.** A notice, consent or communication under the T&C is only effective if it is in writing, signed or on behalf of the party giving it, and if it is received in full and legible form at the address or e-mail address notified by the addressee to the other party from time to time.

**17.3.** No waiver of a right or remedy under the T&C is effective unless it is in writing and signed by the party granting it. It is only effective in the specific instance and for the specific purpose for which it is granted. A single partial exercise of a right or remedy under the T&C does not prevent a further exercise of that or any other right or remedy. Failure or delay to exercise a right or remedy does not operate as a waiver or prevent further exercise of that or any other right or remedy.

**17.4.** A reference in the T&C to a financial year is a reference to each 12-month period commencing 1 July and ending 30 June.

**17.5.** Unless otherwise stated, a party may exercise any rights under the T&C in its own discretion.

## Annex 3.1:

1) Groups of resellers which BGW has reserved for itself or assigned exclusively to third-party dealers:

[None]

2) Territories which BGW has reserved for itself or assigned exclusively to third party distributors:

USA

Canada

Australia

New Zealand

China

United Kingdom

Japan





Bayerische Glaswerke GmbH  
Zacharias-Frank-Straße 7 D-92660 Neustadt a.d. Waldnaab  
Phone 00 49 (0) 96 02/30 0 Fax 00 49 (0) 96 02/30 11 00  
E-mail: [info@nachtmann.de](mailto:info@nachtmann.de) [www.nachtmann.com](http://www.nachtmann.com)